

# CHIPSEC

version 1.12.8



Platform Security Assessment Framework

January 25, 2024

# Contents

<b>CHIPSEC 1.12.8</b>	<b>1</b>
Contact	1
Download CHIPSEC	2
GitHub repository	2
Releases	2
Python	2
Installation	2
Linux Installation	3
Creating a Live Linux image	3
Installing Kali Linux	3
Prerequisites	3
Installing CHIPSEC	4
Building CHIPSEC	4
Run CHIPSEC	4
DAL Windows Installation	4
Prerequisites	4
Building	5
Windows Installation	5
Install CHIPSEC Dependencies	5
Building	6
Turn off kernel driver signature checks	6
Alternate Build Methods	7
Windows PCI Filter Driver	8
Install PCI Filter Driver	9
Filter Driver Access PCI Config Space Test	11
Building a Bootable USB drive with UEFI Shell (x64)	12
Installing CHIPSEC	12
Run CHIPSEC in UEFI Shell	13
Building UEFI Python 3.6.8 (optional)	13
Using CHIPSEC	13
Interpreting results	14
Results	14
Automated Tests	14
Tools	17
Running CHIPSEC	17
Running in Shell	18
Using as a Python Package	18
chipsec_main options	19
chipsec_util options	19

Module & Command Development	19
Architecture Overview	19
Core components	20
Commands	20
utilcmd package	21
acpi_cmd module	21
chipset_cmd module	21
cmos_cmd module	21
config_cmd module	21
cpu_cmd module	21
decode_cmd module	22
deltas_cmd module	22
desc_cmd module	22
ec_cmd module	23
igd_cmd module	23
interrupts_cmd module	23
io_cmd module	24
iommu_cmd module	24
lock_check_cmd module	24
mem_cmd module	25
mmcfg_base_cmd module	25
mmcfg_cmd module	25
mmio_cmd module	25
msgbus_cmd module	26
msr_cmd module	26
pci_cmd module	26
reg_cmd module	27
smbios_cmd module	27
smbus_cmd module	27
spd_cmd module	27
spi_cmd module	28
spidesc_cmd module	28
tpm_cmd module	28
txt_cmd module	29
ucode_cmd module	29
uefi_cmd module	29
vmem_cmd module	29
vmm_cmd module	30
HAL (Hardware Abstraction Layer)	30
hal package	30
acpi module	30

acpi_tables module	30
cmos module	31
cpu module	31
cpuid module	31
ec module	31
hal_base module	31
igd module	31
interrupts module	32
io module	32
iobar module	32
iommu module	32
locks module	32
mmio module	32
msgbus module	33
msr module	33
paging module	33
pci module	33
pcidb module	34
physmem module	34
smbios module	34
smbus module	34
spd module	34
spi module	35
spi_descriptor module	35
spi_jedec_ids module	35
spi_uefi module	35
tpm module	36
tpm12_commands module	36
tpm_eventlog module	36
ucode module	36
uefi module	36
uefi_common module	36
uefi_compression module	37
uefi_fv module	37
uefi_platform module	37
uefi_search module	37
virtmem module	37
vmm module	37
Fuzzing	37
fuzzing package	37
primitives module	37

CHIPSEC_MAIN Program Flow	37
CHIPSEC_UTIL Program Flow	38
Auxiliary components	38
Executable build scripts	38
Configuration Files	38
Configuration File Example	39
List of Cfg components	39
Writing Your Own Modules	49
OS Helpers and Drivers	50
Mostly invoked by HAL modules	50
Helpers import from BaseHelper	51
Create a New Helper	51
Example	51
Helper components	51
helper package	51
dal package	51
dalhelper module	51
efi package	51
efihelper module	51
linux package	52
linuxhelper module	52
linuxnative package	52
cpuid module	52
legacy_pci module	52
linuxnativehelper module	52
windows package	52
windowshelper module	52
basehelper module	52
nonehelper module	52
oshelper module	52
Methods for Platform Detection	53
Uses PCI VID and DID to detect processor and PCH	53
Chip information located in <code>chipsec/chipset.py</code> .	53
Platform Configuration Options	53
Sample module code template	53
CHIPSEC Modules	54
Modules	59
modules package	59
bdw package	59
byt package	59
common package	59

cpu package	59
cpu_info module	59
ia_untrusted module	59
spectre_v2 module	60
secureboot package	61
variables module	61
uefi package	62
access_uefispec module	62
s3bootscript module	62
bios_kbrd_buffer module	63
bios_smi module	63
bios_ts module	64
bios_wp module	64
cet module	65
debugenabled module	65
ia32cfg module	66
me_mfg_mode module	66
memconfig module	67
memlock module	67
remap module	68
rtclock module	69
sgx_check module	69
smm module	70
smm_code_chk module	70
smm_dma module	70
smrr module	71
spd_wd module	72
spi_access module	72
spi_desc module	73
spi_fdopss module	73
spi_lock module	73
hsw package	74
ivb package	74
snb package	74
tools package	74
cpu package	74
sinkhole module	74
secureboot package	75
te module	75
smm package	76
rogue_mmio_bar module	76

smm_ptr module	76
uefi package	77
reputation module	77
s3script_modify module	78
scan_blocked module	79
scan_image module	80
uefivar_fuzz module	80
vmm package	81
hv package	81
define module	81
hypercall module	81
hypercallfuzz module	81
synth_dev module	82
synth_kbd module	82
vmbus module	82
vmbusfuzz module	82
vbox package	83
vbox_crash_apicbase module	83
xen package	84
define module	84
hypercall module	84
hypercallfuzz module	84
xsa188 module	85
common module	85
cpuid_fuzz module	85
ept_finder module	86
hypercallfuzz module	87
iofuzz module	87
msr_fuzz module	88
pcie_fuzz module	89
pcie_overlap_fuzz module	90
venom module	91
generate_test_id module	91
wsmt module	91
Contribution and Style Guides	92
Python Version	92
Python Coding Style Guide	92
f-Strings	95
Type Hints	95
Underscores in Numeric Literals	97
Walrus Operator (:=)	97





## CHIPSEC 1.12.8

CHIPSEC is a framework for analyzing platform level security of hardware, devices, system firmware, low-level protection mechanisms, and the configuration of various platform components.

It contains a set of modules, including simple tests for hardware protections and correct configuration, tests for vulnerabilities in firmware and platform components, security assessment and fuzzing tools for various platform devices and interfaces, and tools acquiring critical firmware and device artifacts.

CHIPSEC can run on *Windows*, *Linux*, *Mac OS* and *UEFI shell*. Mac OS support is Beta.

### Warning

Chipsec should only be used on test systems!

It should not be installed/deployed on production end-user systems.

There are multiple reasons for that:

1. Chipsec kernel drivers provide direct access to hardware resources to user-mode applications (for example, access to physical memory). When installed on production systems this could allow malware to access privileged hardware resources.
2. The driver is distributed as source code. In order to load it on Operating System which requires kernel drivers to be signed (for example, 64 bit versions of Microsoft Windows 7 and higher), it is necessary to enable TestSigning (or equivalent) mode and sign the driver executable with test signature. Enabling TestSigning (or equivalent) mode turns off an important OS kernel protection and should not be done on production systems.
3. Due to the nature of access to hardware, if any chipsec module issues incorrect access to hardware resources, Operating System can hang or panic.

## Contact

For any questions or suggestions please contact us at: [chipsec@intel.com](mailto:chipsec@intel.com)

We also have the [issue tracker](#) in our GitHub repo. If you'd like to report a bug or make a request please open an issue.

If you'd like to make a contribution to the code please open a [pull request](#)

Mailing list:

- Site: <https://lists.linux.dev/>
- Name: oe-chipsec
- List Address: [oe-chipsec@lists.linux.dev](mailto:oe-chipsec@lists.linux.dev)
- Archive Site: <https://lore.kernel.org/oe-chipsec/>

If you wish to subscribe, please send an email to: [oe-chipsec+subscribe@lists.linux.dev](mailto:oe-chipsec+subscribe@lists.linux.dev)

Twitter:

- For CHIPSEC release alerts: Follow [CHIPSEC Release](#)
- For general CHIPSEC info: Follow [CHIPSEC](#)

## 2 - Download CHIPSEC

Discord:

- *CHIPSEC Discord Server* <<https://discord.gg/NvxdPe8RKt>>

### Note

For **AMD** related questions or suggestions please contact Gabriel Kerneis at:  
[Gabriel.Kerneis@ssi.gouv.fr](mailto:Gabriel.Kerneis@ssi.gouv.fr)

## Download CHIPSEC

### GitHub repository

CHIPSEC source files are maintained in a GitHub repository:

GitHub Repo

### Releases

You can find the latest release here:

Latest Release

Older releases can be found [here](#)

After downloading there are some steps to follow to build the driver and run, please refer to [Installation](#) and [running CHIPSEC](#)

### Python

Python downloads:

<https://www.python.org/downloads/>

## Installation

CHIPSEC supports Windows, Linux, Mac OS X, DAL and UEFI shell. Circumstances surrounding the target platform may change which of these environments is most appropriate.

## Linux Installation

### Tested on:

- [Fedora LXDE 64bit](#)
- [Ubuntu 64bit](#)
- [Debian 64bit and 32bit](#)
- [Linux UEFI Validation \(LUV\)](#)
- [ArchStrike Linux](#)
- [Kali Linux](#)

Run CHIPSEC on a desired Linux distribution or create a live Linux image on a USB flash drive and boot to it.

## Creating a Live Linux image

1. Download things you will need:
  - Desired Linux image (e.g. Fedora LXDE 64bit)
  - [Rufus](#)
2. Use Rufus to image a USB stick with the desired Linux image. Include as much persistent storage as possible.
3. Reboot to USB

## Installing Kali Linux

[Download](#) and [install](#) Kali Linux

## Prerequisites

Python 3.7 or higher (<https://www.python.org/downloads/>)

### Note

CHIPSEC has deprecated support for Python2 since June 2020

Install or update necessary dependencies before installing CHIPSEC:

```
dnf install kernel kernel-devel-$(uname -r) python3 python3-devel gcc nasm redhat-rpm-config elfutils-libelf-devel git
```

or

```
apt-get install build-essential python3-dev python3 gcc linux-headers-$(uname -r) nasm
```

or

## 4 - Download CHIPSEC

```
pacman -S python3 python3-setuptools nasm linux-headers
```

To install requirements:

```
pip install -r linux_requirements.txt
```

### Installing CHIPSEC

#### Get latest CHIPSEC release from PyPI repository

```
pip install chipsec
```

#### Note

Version in PyPI is outdate please refrain from using until further notice

#### Get CHIPSEC package from latest source code

Download zip from CHIPSEC repo

[Download CHIPSEC](#)

or

Clone CHIPSEC source

```
git clone https://github.com/chipsec/chipsec.git
```

### Building CHIPSEC

Build the Driver and Compression Tools

```
python setup.py build_ext -i
```

### Run CHIPSEC

Follow steps in section “Using as a Python package” of [Running CHIPSEC](#)

## DAL Windows Installation

### Prerequisites

Python 3.7 or higher (<https://www.python.org/downloads/>)

## 5 - Download CHIPSEC

### Note

CHIPSEC has deprecated support for Python2 since June 2020

pywin32: for Windows API support (<https://pypi.org/project/pywin32/#files>)

Intel System Studio: (<https://software.intel.com/en-us/system-studio>)

git: open source distributed version control system (<https://git-scm.com/>)

## Building

Clone CHIPSEC source

```
git clone https://github.com/chipsec/chipsec.git
```

## Windows Installation

CHIPSEC supports the following versions:

Windows 8, 8.1, 10, 11 - x86 and AMD64

Windows Server 2012, 2016, 2019, 2022 - x86 and AMD64

### Note

CHIPSEC has removed support for the RWEverything (<https://rweverything.com/>) driver due to PCI configuration space access issues.

## Install CHIPSEC Dependencies

Python 3.7 or higher (<https://www.python.org/downloads/>)

### Note

CHIPSEC has deprecated support for Python2 since June 2020

To install requirements:

```
pip install -r windows_requirements.txt
```

which includes:

- [pywin32](#): for Windows API support (*pip install pywin32*)
- [setuptools](#) (*pip install setuptools*)
- [WConio2](#): Optional. For colored console output (*pip install Wconio2*)

## 6 - Download CHIPSEC

To compile the driver:

[Visual Studio and WDK](#): for building the driver.

For best results use the latest available (**VS2022 + SDK/WDK 11** or **VS2019 + SDK/WDK 10 or 11**)

### Note

Make sure to install compatible VS/SDK/WDK versions and the spectre mitigation packages

To clone the repo:

[git](#): open source distributed version control system

## Building

Clone CHIPSEC source

```
git clone https://github.com/chipsec/chipsec.git
```

Build the Driver and Compression Tools

```
python setup.py build_ext -i
```

### Note

If build errors are with signing are encountered, try running as Administrator The .vcxproj file points to the latest SDK, if this is incompatible with the WDK, change the configuration to a compatible SDK within the project properties

## Turn off kernel driver signature checks

### Enable boot menu

In CMD shell:

```
bcdedit /set {bootmgr} displaybootmenu yes
```

### With Secure Boot enabled:

Method 1:

- In CMD shell: `shutdown /r /t 0 /o` or Start button -> Power icon -> SHIFT key + Restart
- Navigate: Troubleshooting -> Advanced Settings -> Startup Settings -> Reboot
- After reset choose F7 or 7 "Disable driver signature checks"

Method 2:

- Disable Secure Boot in the BIOS setup screen then disable driver signature checks as with Secure Boot disabled

### With Secure Boot disabled:

## 7 - Download CHIPSEC

Method 1:

- **Boot in Test mode (allows self-signed certificates)**
  - Start CMD.EXE as Administrator `BcdEdit /set TESTSIGNING ON`
  - Reboot
  - **If this doesn't work, run these additional commands:**
    - `BcdEdit /set noIntegrityChecks ON`
    - `BcdEdit /set loadoptions DDISABLE_INTEGRITY_CHECKS`

Method 2:

- Press F8 when booting Windows and choose "No driver signatures enforcement" option to turn off driver signature checks

### Alternate Build Methods

#### Build CHIPSEC kernel driver with Visual Studio

Method 1:

- Open the Visual Studio project file (drivers/windows/chipsec\_hlpr.vcxproj) using Visual Studio
- Select Platform and configuration (X86 or x64, Release)
- Go to Build -> Build Solution

Method 2:

- Open a VS developer command prompt
- `> cd <CHIPSEC_ROOT_DIR>\drivers\windows`
- **Build driver using msbuild command:**

• `> msbuild /p:Platform=x64`  
or

• `> msbuild /p:Platform=x32`

If build process is completed without any errors, the driver binary will be moved into the chipsec helper directory:

`<CHIPSEC_ROOT_DIR>\chipsec\helper\windows\windows_amd64 (or i386)`

#### Build the compression tools

Method:

- Navigate to the chipsec\_toolscompression directory
- Run `python setup.py build`
- Copy the `EfiCompressor.cp<pyver>-win_<arch>.pyd` file from `build/lib.win-<arch>-<pyver>` to the root chipsec directory

#### Alternate Method to load CHIPSEC service/driver

To create and start CHIPSEC service

## 8 - Download CHIPSEC

```
sc create chipsec binpath="<PATH_TO_SYS>" type= kernel DisplayName="Chipsec driver"  
sc start chipsec
```

When finished running CHIPSEC stop/delete service:

```
sc stop chipsec  
sc delete chipsec
```

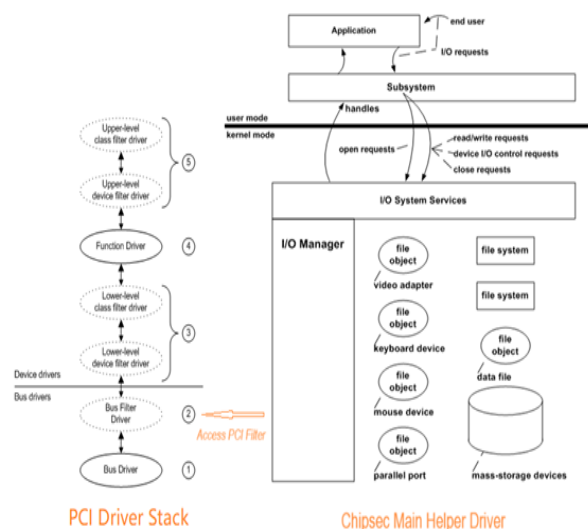
## Windows PCI Filter Driver

### Filter driver background

Since July 31, 2020 Microsoft has released Windows 2020-KB4568831 (OS Build 19041.423) Preview. Microsoft recommends to not access the PCI configuration space using the legacy API, as it might result in the Windows BSOD (Blue Screen of Death). The BSOD trigger condition is "Windows version >= (OS Build 19041.423) && Secure Devices (SDEV) ACPI table && VBS enabled". Therefore, CHIPSEC now includes a PCI filter driver which supplements the original CHIPSEC Windows Driver to access the PCI configuration space. A system requires the PCI Filter Driver if the conditions above are met.

Windows devices that receive the 2020-KB4568831 (OS Build 19041.423) Preview or later updates restrict how processes can access peripheral component interconnect (PCI) device configuration space if a Secure Devices (SDEV) ACPI table is present and Virtualization-based Security (VBS) is running. Processes that have to access PCI device configuration space must use officially supported mechanisms. The SDEV table defines secure hardware devices in ACPI. VBS is enabled on a system if security features that use virtualization are enabled. Some examples of these features are Hypervisor Code Integrity or Windows Defender Credential Guard. The new restrictions are designed to prevent malicious processes from modifying the configuration space of secure devices. Device drivers or other system processes must not try to manipulate the configuration space of any PCI devices, except by using the Microsoft-provided bus interfaces or IRP. If a process tries to access PCI configuration space in an unsupported manner (such as by parsing MCFG table and mapping configuration space to virtual memory), Windows denies access to the process and generates a Stop error. For more detail please refer below link: <https://learn.microsoft.com/en-us/troubleshoot/windows-client/performance/stop-error-lenovo-thinkpad-kb4568831-uefi>

### Filter Driver and Main Helper Driver Architecture



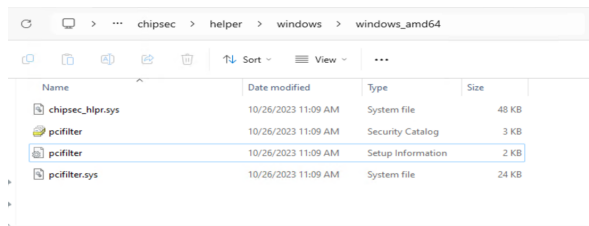
CHIPSEC Main & Filter Driver Architecture



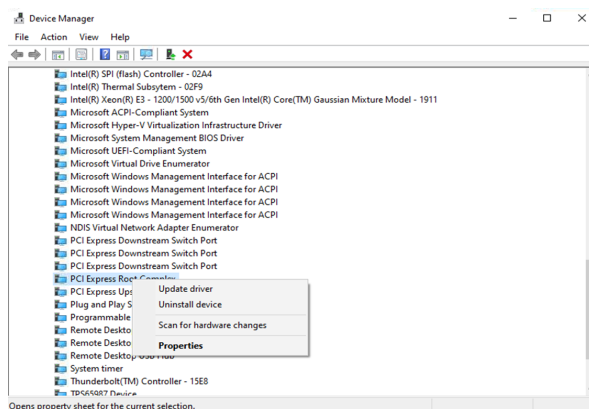
## 9 - Download CHIPSEC

### Install PCI Filter Driver

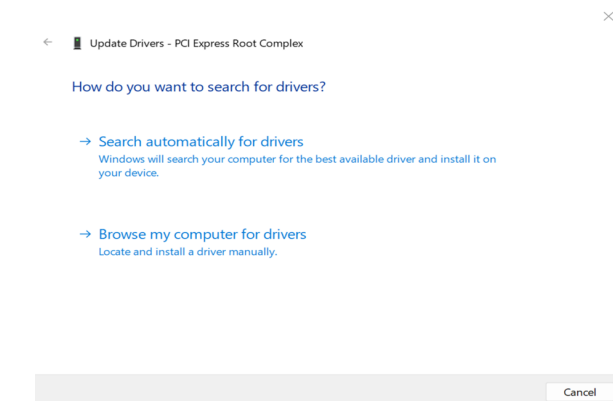
Locate the Filter Driver Files: `chipsec/helper/windows/windows_amd64/`



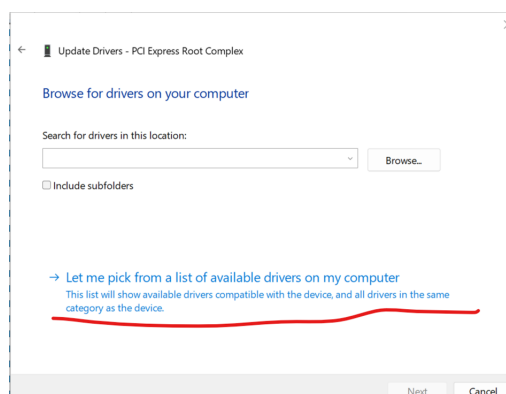
### Update The PCI Device Driver From Device Manager



### Browse The PCI Filter Driver

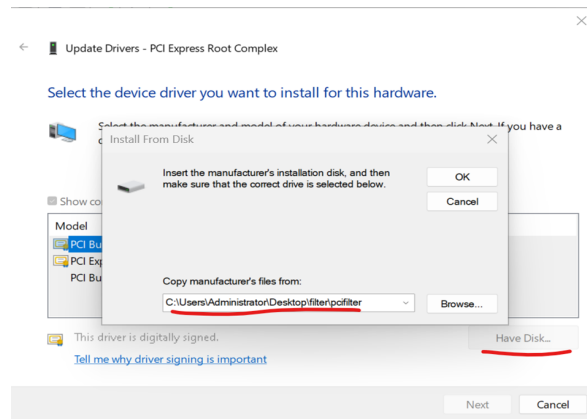


### Manually Select The PCI Bus Filter Driver

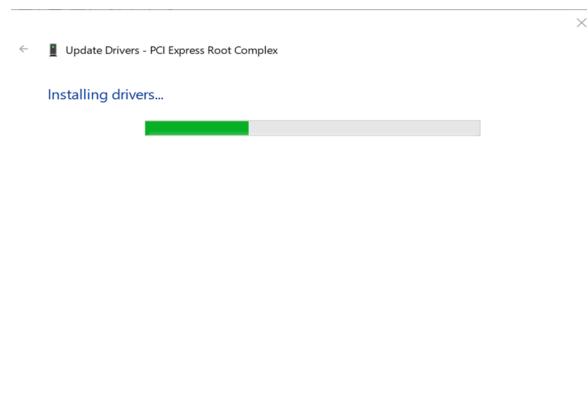


## 10 - Download CHIPSEC

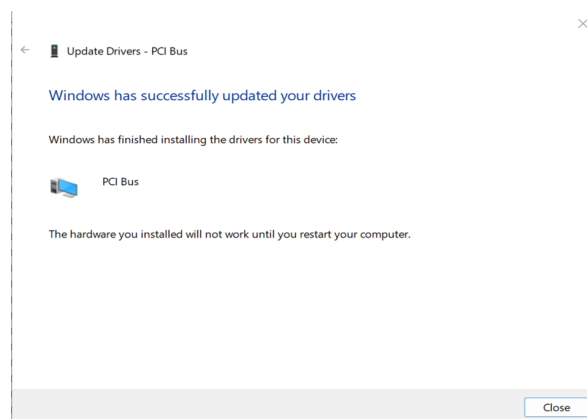
### Install The Filter Driver From Disk



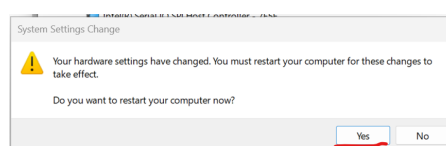
### Installing The Filter Driver



### Finish The Filter Driver Installing



### Restart Computer



### Check The Installed Device Driver From Device Manager

## Check The Driver Device Info

## Filter Driver Access PCI Config Space Test

## Dump PCI Config Test

```
chipsec util.py pci dump 0
```

```
py chipsec_util.py pci dump 0 0 0
```

## PCI Enumeration Test

## 12 - Download CHIPSEC

```
C:\Users\Administrator\chipsec> py .\chipsec_util.py pci enumerate
#####
## CHIPSEC: Platform Hardware Security Assessment Framework ##
#####
[CHIPSEC] Version : 1.11.1
[CHIPSEC] Arguments: pci enumerate

WARNING: *****
WARNING: Chipsec should only be used on test systems!
WARNING: It should not be installed/deployed on production end-user systems.
WARNING: See WARNING.txt
WARNING: *****

[CHIPSEC] OS : Windows 10 10.0.22H2 AMD64
[CHIPSEC] Python : 3.11.2 (64-bit)
[CHIPSEC] Hostname : Windowschipsec (\\?\C:\Users\Administrator\Desktop\chipsec-1.12.0-p8889-INTERNAL-0846\chipsec-1.12.0-p8889-INTERNAL-0846)
[CHIPSEC] Platform: TGA UP3 4 Cores
[CHIPSEC] CPUID: 806C
[CHIPSEC] CUID: 806C
[CHIPSEC] RID: 0A14
[CHIPSEC] RID: 95
[CHIPSEC] PCH : Xae PCH Premium UP3
[CHIPSEC] RID: 8065
[CHIPSEC] RID: 8062
[CHIPSEC] RID: 20

[CHIPSEC] Executing command 'pci' with args ['enumerate']

[CHIPSEC] Enumerating available PCIe devices...
+-----+-----+-----+-----+-----+-----+-----+-----+-----+-----+
| VID | DID | Vendor | Device |
+-----+-----+-----+-----+-----+-----+-----+-----+-----+-----+
| 8086 | 0A14 | Intel Corporation | 11th Gen Core Processor Host Bridge/DRAM Registers |
| 8086 | 0A15 | Intel Corporation | 11th Gen Core Processor PCIe Controller |
| 8086 | 0A16 | Intel Corporation | Tiger Lake-LP Thunderbolt 4 PCI Express Root Port #1 |
| 8086 | 0A17 | Intel Corporation | Tiger Lake-LP Thunderbolt 4 PCI Express Root Port #2 |
| 8086 | 0A18 | Intel Corporation | GMA Scoring Accelerator Module |
| 8086 | 0A19 | Intel Corporation | Tiger Lake-LP Thunderbolt 4 USB Controller |
| 8086 | 0A1A | Intel Corporation | Tiger Lake-LP Thunderbolt 4 NHI #1 |
| 8086 | 0A1B | Intel Corporation | Tiger Lake-LP USB 3.1 Gen 1 xHCI Host Controller |
| 8086 | 0A1C | Intel Corporation | Tiger Lake-LP Shared SRAM |
| 8086 | 0A1D | Intel Corporation | UFS 3.1 A200 |
| 8086 | 0A1E | Intel Corporation | Tiger Lake-LP Serial IO IIC Controller #0 |
| 8086 | 0A1F | Intel Corporation | Tiger Lake-LP Serial IO IIC Controller #1 |
| 8086 | 0A20 | Intel Corporation | Tiger Lake-LP Management Engine Interface |
| 8086 | 0A21 | Intel Corporation | Tiger Lake-LP Active Management Technology - SMC |
| 8086 | 0A22 | Intel Corporation | Tiger Lake-LP SATA Controller |
| 8086 | 0A23 | Intel Corporation | Tiger Lake-LP LPC Controller |
| 8086 | 0A24 | Intel Corporation | Tiger Lake-LP Smart Sound Technology Audio Controller |
| 8086 | 0A25 | Intel Corporation | Tiger Lake-LP SMBus Controller |
| 8086 | 0A26 | Intel Corporation | Tiger Lake-LP SPI Controller |
| 8086 | 0A27 | Intel Corporation | SSD 600P Series |
| 8086 | 0A28 | Intel Corporation | Ethernet Controller I225-LN |

[CHIPSEC] (pci) time elapsed 0.009
C:\Users\Administrator\chipsec>
```

py chipsec\_util.py pci enumerate

## Building a Bootable USB drive with UEFI Shell (x64)

1. Format your media as FAT32
2. Create the following directory structure in the root of the new media
  - /efi/boot
3. Download the UEFI Shell (Shell.efi) from the following link
  - <https://github.com/tianocore/edk2/blob/UDK2018/ShellBinPkg/UefiShell/X64/Shell.efi>
4. Rename the UEFI shell file to Bootx64.efi
5. Copy the UEFI shell (now Bootx64.efi) to the /efi/boot directory

## Installing CHIPSEC

1. Extract the contents of \_\_install\_\_/UEFI/chipsec\_py368\_uefi\_x64.zip to the USB drive, as appropriate.
  - This will create a /efi/Tools directory with Python.efi and /efi/StdLib with subdirectories for dependencies.
2. Copy the contents of CHIPSEC to the USB drive.

The contents of your drive should look like follows:

```
- fs0:
- efi
- boot
- bootx64.efi (optional)
- StdLib
- lib
- python36.8
- [lots of python files and directories]
- Tools
- Python.efi
- chipsec
- chipsec
- ...
```

## 13 - Using CHIPSEC

```
- chipsec_main.py
- chipsec_util.py
- ...
```

3. Reboot to the USB drive (this will boot to UEFI shell).

- You may need to enable booting from USB in BIOS setup.
- You will need to disable UEFI Secure Boot to boot to the UEFI Shell.

### Run CHIPSEC in UEFI Shell

```
fs0:
cd chipsec
python.efi chipsec_main.py or python.efi chipsec_util.py
```

Next follow steps in section “Basic Usage” of [Running CHIPSEC](#)

### Building UEFI Python 3.6.8 (optional)

1. Start with [Py368Readme.txt](#)

- Latest EDK2, visit [Tianocore EDK2 Github](#) (Make sure to update submodules)
- Latest EDK2-LIBC, visit [Tianocore EDK2-LIBC Github](#)
- Follow setup steps described in the `Py368Readme.txt`

2. Make modifications as needed

- CPython / C file(s):
  - [edk2module.c](#)
- ASM file(s):
  - [cpu.nasm](#)
  - [cpu\\_ia32.nasm](#)
  - [cpu\\_gcc.s](#)
  - [cpu\\_ia32\\_gcc.s](#)
- INF file(s):
  - [Python368.inf](#)

3. Build and directory creation steps are covered in the [Py368Readme.txt](#)

- MSVS build tools are highly recommended

## Using CHIPSEC

CHIPSEC should be launched as Administrator/root

## 14 - Using CHIPSEC

CHIPSEC will automatically attempt to create and start its service, including load its kernel-mode driver. If CHIPSEC service is already running then it will attempt to connect to the existing service.

Use `--no-driver` command-line option to skip loading the kernel module. This option will only work for certain commands or modules.

### Interpreting results

#### Note

DRAFT (work in progress)

In order to improve usability, we are reviewing and improving the messages and meaning of information returned by CHIPSEC.

### Results

#### Generic results meanings

Result	Meaning
PASSED	A <b>mitigation</b> to a known vulnerability has been detected
FAILED	A known <b>vulnerability</b> has been detected
WARNING	We have detected something that could be a vulnerability but <b>manual analysis is required</b> to confirm (inconclusive)
NOT_APPLICABLE	The issue checked by this module is not applicable to this platform. This result can be ignored
INFORMATION	This module does not check for a vulnerability. It just prints information about the system
ERROR	Something went wrong in the execution of CHIPSEC

### Automated Tests

Each test module can log additional messaging in addition to the return value. In an effort to standardize and improve the clarity of this messaging, the mapping of result and messages is defined below:

## Modules results meanings

Test	PASSED message	FAILED message	WARNING message	Notes
memconfig	All memory map registers seem to be locked down	Not all memory map registers are locked down	N/A	
Remap	Memory Remap is configured correctly and locked	Memory Remap is not properly configured/locked. Remaping attack may be possible.	N/A	
smm_dma	TSEG is properly configured. SMRAM is protected from DMA attacks.	TSEG is properly configured, but the configuration is not locked or TSEG is not properly configured. Portions of SMRAM may be vulnerable to DMA attacks	TSEG is properly configured but can't determine if it covers entire SMRAM	
common.bios_kbrd_buffer	"Keyboard buffer is filled with common fill pattern" or "Keyboard buffer looks empty. Pre-boot passwords don't seem to be exposed	FAILED	Keyboard buffer is not empty. The test cannot determine conclusively if it contains pre-boot passwords. The contents might have not been cleared by pre-boot firmware or overwritten with garbage. Visually inspect the contents of keyboard buffer for pre-boot passwords (BIOS, HDD, full-disk encryption).	Also printing a message if size of buffer is revealed. "Was your password %d characters long?"
common.bios_smi	All required SMI sources seem to be enabled and locked	Not all required SMI sources are enabled and locked	Not all required SMI sources are enabled and locked, but SPI flash writes are still restricted to SMM	
common.bios_ts	BIOS Interface is locked (including Top Swap Mode)	BIOS Interface is not locked (including Top Swap Mode)	N/A	

common.bios_wp	BIOS is write protected	BIOS should enable all available SMM based write protection mechanisms or configure SPI protected ranges to protect the entire BIOS region. BIOS is NOT protected completely	N/A	
common.ia32cfg	IA32_FEATURE_CONTROL MSR is locked on all logical CPUs	IA32_FEATURE_CONTROL MSR is not locked on all logical CPUs	N/A	
common.rtclock	Protected locations in RTC memory are locked	N/A	Protected locations in RTC memory are accessible (BIOS may not be using them)	
common.smm	Compatible SMRAM is locked down	Compatible SMRAM is not properly locked. Expected ( D_LCK = 1, D_OPEN = 0 )	N/A	Should return SKIPPED_NOT_APPLICABLE when compatible SMRAM is not enabled.
common.smrr	SMRR protection against cache attack is properly configured	SMRR protection against cache attack is not configured properly	N/A	
common.spi_access	SPI Flash Region Access Permissions in flash descriptor look ok	SPI Flash Region Access Permissions are not programmed securely in flash descriptor	Software has write access to GBe region in SPI flash" and "Certain SPI flash regions are writeable by software	we have observed production systems reacting badly when GBe was overwritten
common.spi_desc	SPI flash permissions prevent SW from writing to flash descriptor	SPI flash permissions allow SW to write flash descriptor	N/A	we can probably remove this now that we have spi_access
common.spi_fds	SPI Flash Descriptor Security Override is disabled	SPI Flash Descriptor Security Override is enabled	N/A	



common.spi_lock	SPI Flash Controller configuration is locked	SPI Flash Controller configuration is not locked	N/A	
common.cpu.spectre_v2	CPU and OS support hardware mitigations (enhanced IBRS and STIBP)	CPU mitigation (IBRS) is missing	CPU supports mitigation (IBRS) but doesn't support enhanced IBRS" or "CPU supports mitigation (enhanced IBRS) but OS is not using it" or "CPU supports mitigation (enhanced IBRS) but STIBP is not supported/enabled	
common.secureboot.variables	All Secure Boot UEFI variables are protected	Not all Secure Boot UEFI variables are protected' (failure when secure boot is enabled)	Not all Secure Boot UEFI variables are protected' (warning when secure boot is disabled)	
common.uefi.access_uefispec	All checked EFI variables are protected according to spec	Some EFI variables were not protected according to spec	Extra/Missing attributes	
common.uefi.s3bootscript	N/A	S3 Boot-Script and Dispatch entry-points do not appear to be protected	S3 Boot-Script is not in SMRAM but Dispatch entry-points appear to be protected. Recommend further testing	unfortunately, if the boot script is well protected (in SMRAM) we cannot find it at all and end up returning warning

## Tools

CHIPSEC also contains tools such as fuzzers, which require a knowledgeable user to run. We can examine the usability of these tools as well.

## Running CHIPSEC

CHIPSEC should be launched as Administrator/root.

CHIPSEC will automatically attempt to create and start its service, including load its kernel-mode driver. If CHIPSEC service is already running then it will attempt to connect to the existing service.

## 18 - Using CHIPSEC

Use `--no-driver` command-line option to skip loading the kernel module. This option will only work for certain commands or modules.

Use `-m --module` to run a specific module (e.g. security check, a tool or a PoC..):

- `# python chipsec_main.py -m common.bios_wp`
- `# python chipsec_main.py -m common.spi_lock`
- `# python chipsec_main.py -m common.smrr`
- You can also use CHIPSEC to access various hardware resources:
  - `# python chipsec_util.py`

### Running in Shell

#### Basic usage

```
# python chipsec_main.py
# python chipsec_util.py
```

#### For help, run

```
# python chipsec_main.py --help
# python chipsec_util.py --help
```

### Using as a Python Package

Install CHIPSEC manually or from PyPI. You can then use CHIPSEC from your Python project or from the Python shell:

To install and run CHIPSEC as a package:

```
# python setup.py install
# sudo chipsec_main
```

From the Python shell:

```
>>> import chipsec_main
>>> chipsec_main.run()
>>> chipsec_main.run('-m common.bios_wp')
```

```
>>> import chipsec_util
>>> chipsec_util.run()
>>> chipsec_util.run('spi info')
```

To use CHIPSEC *in place* without installing it:

```
# python setup.py build_ext -i
# sudo python chipsec_main.py
```

## chipsec\_main options

```
usage: chipsec_main.py [options]

Options:
  -h, --help                Show this message and exit
  -m, --module _MODULE       Specify module to run (example: -m common.bios_wp)
  -mx, --module_exclude _MODULE1 ... Specify module(s) to NOT run (example: -mx common.bios_wp common.cpu.cpu_info)
  -a, --module_args _MODULE_ARGV Additional module arguments
  -v, --verbose              Verbose logging
  --hal                     HAL logging
  -d, --debug               Debug logging
  -l, --log LOG              Output to log file
  -vv, --vverbose           Very verbose logging (verbose + HAL + debug)

Advanced Options:
  -p, --platform _PLATFORM Explicitly specify platform code
  --pch _PCH                Explicitly specify PCH code
  -n, --no_driver           Chipsec won't need kernel mode functions so don't load chipsec driver
  -i, --ignore_platform     Run chipsec even if the platform is not recognized (Deprecated)
  -j, --json _JSON_OUT      Specify filename for JSON output
  -x, --xml _XML_OUT        Specify filename for xml output (JUnit style)
  -k, --markdown            Specify filename for markdown output
  -t, --moduletype USER_MODULE_TAGS Run tests of a specific type (tag)
  --list_tags               List all the available options for -t,--moduletype
  -I, --include IMPORT_PATHS Specify additional path to load modules from
  --failfast                Fail on any exception and exit (don't mask exceptions)
  --no_time                 Don't log timestamps
  --deltas _DELTAS_FILE     Specifies a JSON log file to compute result deltas from
  --helper _HELPER          Specify OS Helper
  -nb, --no_banner          Chipsec won't display banner information
  --skip_config              Skip configuration and driver loading
  -nl                       Chipsec won't save logs automatically
```

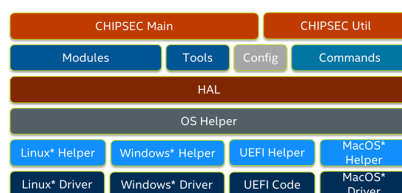
## chipsec\_util options

```
usage: chipsec_util.py [options] <command> [<args>]

Options:
  -h, --help                Show this message and exit
  -v, --verbose              Verbose logging
  --hal                     HAL logging
  -d, --debug               Debug logging
  -vv, --vverbose           Very verbose logging (verbose + HAL + debug)
  -l, --log LOG              Output to log file
  -p, --platform _PLATFORM Explicitly specify platform code
  --pch _PCH                Explicitly specify PCH code
  -n, --no_driver           Chipsec won't need kernel mode functions so don't load chipsec driver
  -i, --ignore_platform     Run chipsec even if the platform is not recognized (Deprecated)
  --helper _HELPER          Specify OS Helper
  -nb, --no_banner          Chipsec won't display banner information
  --skip_config              Skip configuration and driver loading
  -nl                       Chipsec won't save logs automatically
  command                   Util command to run
  args                      Additional arguments for specific command. All numeric values are in hex. <width> is in {1 - byte, 2 - word, 4 - dword}
```

## Module &amp; Command Development

## Architecture Overview



*CHIPSEC Architecture***Core components**

<code>chipsec_main.py</code>	main application logic and automation functions
<code>chipsec_util.py</code>	utility functions (access to various hardware resources)
<code>chipsec/chipset.py</code>	chipset detection
<code>chipsec/command.py</code>	base class for util commands
<code>chipsec/defines.py</code>	common defines
<code>chipsec/file.py</code>	reading from/writing to files
<code>chipsec/logger.py</code>	logging functions
<code>chipsec/module.py</code>	generic functions to import and load modules
<code>chipsec/module_common.py</code>	base class for modules
<code>chipsec/result_deltas.py</code>	supports checking result deltas between test runs
<code>chipsec/testcase.py</code>	support for XML and JSON log file output
<code>chipsec/helper/helpers.py</code>	registry of supported OS helpers
<code>chipsec/helper/oshelper.py</code>	OS helper: wrapper around platform specific code that invokes kernel driver

**Commands**

Implement functionality of `chipsec_util`.

CHIPSEC utilities provide the capability for manual testing and direct hardware access.

**Warning**

DIRECT HARDWARE ACCESS PROVIDED BY THESE UTILITIES COULD MAKE YOUR SYSTEM UNBOOTABLE. MAKE SURE YOU KNOW WHAT YOU ARE DOING!

**Note**

All numeric values in the instructions are in hex.

## utilcmd package

## acpi\_cmd module

Command-line utility providing access to ACPI tables

```
>>> chipsec_util acpi list
>>> chipsec_util acpi table <name>|<file_path>
```

Examples:

```
>>> chipsec_util acpi list
>>> chipsec_util acpi table XSDT
>>> chipsec_util acpi table acpi_table.bin
```

## chipset\_cmd module

usage as a standalone utility:

```
>>> chipsec_util platform
```

## cmos\_cmd module

```
>>> chipsec_util cmos dump
>>> chipsec_util cmos readl|writel|readh|writeh <byte_offset> [byte_val]
```

Examples:

```
>>> chipsec_util cmos dump
>>> chipsec_util cmos readl 0x0
>>> chipsec_util cmos writeh 0x0 0xCC
```

## config\_cmd module

```
>>> chipsec_util config show [config] <name>
```

Examples:

```
>>> chipsec_util config show ALL
>>> chipsec_util config show MMIO_BARS
>>> chipsec_util config show REGISTERS BC
```

## cpu\_cmd module

```
>>> chipsec_util cpu info
>>> chipsec_util cpu cr <thread> <cr_number> [value]
>>> chipsec_util cpu cpuid <eax> [ecx]
>>> chipsec_util cpu pt [paging_base_cr3]
>>> chipsec_util cpu topology
```

Examples:

```
>>> chipsec_util cpu info
>>> chipsec_util cpu cr 0 0
```

## 22 - Module & Command Development

```
>>> chipsec_util cpu cr 0 4 0x0
>>> chipsec_util cpu cpuid 0x40000000
>>> chipsec_util cpu pt
>>> chipsec_util cpu topology
```

### decode\_cmd module

CHIPSEC can parse an image file containing data from the SPI flash (such as the result of `chipsec_util spi dump`). This can be critical in forensic analysis.

This will create multiple log files, binaries, and directories that correspond to the sections, firmware volumes, files, variables, etc. stored in the SPI flash.

Usage:

```
>>> chipsec_util decode <rom> [fw_type]
```

For a list of fw types run:

```
>>> chipsec_util decode types
```

Examples:

```
>>> chipsec_util decode spi.bin vss
```

### Note

- It may be necessary to try various options for `fw_type` in order to correctly parse NVRAM variables. Currently, CHIPSEC does not autodetect the correct format. If the `nvr` directory does not appear and the list of `nvr` variables is empty, try again with another type.

### deltas\_cmd module

```
>>> chipsec_util deltas <previous> <current> [out-format] [out-name]
```

out-format - JSON | XML out-name - Output file name

Example: `>>> chipsec_util deltas run1.json run2.json`

### desc\_cmd module

The `idt`, `gdt` and `ldt` commands print the IDT, GDT and LDT, respectively.

IDT command:

```
>>> chipsec_util idt [cpu_id]
```

Examples:

```
>>> chipsec_util idt 0
>>> chipsec_util idt
```

GDT command:

```
>>> chipsec_util gdt [cpu_id]
```

## 23 - Module & Command Development

### Examples:

```
>>> chipsec_util gdt 0
>>> chipsec_util gdt
```

### LDT command:

```
>>> chipsec_util ldt [cpu_id]
```

### Examples:

```
>>> chipsec_util ldt 0
>>> chipsec_util ldt
```

## ec\_cmd module

```
>>> chipsec_util ec dump      [<size>]
>>> chipsec_util ec command <command>
>>> chipsec_util ec read      <offset> [<size>]
>>> chipsec_util ec write     <offset> <byte_val>
>>> chipsec_util ec index     [<offset>]
```

### Examples:

```
>>> chipsec_util ec dump
>>> chipsec_util ec command 0x001
>>> chipsec_util ec read    0x2F
>>> chipsec_util ec write   0x2F 0x00
>>> chipsec_util ec index
```

## igd\_cmd module

The igd command allows memory read/write operations using igd dma.

```
>>> chipsec_util igd
>>> chipsec_util igd dmaread <address> [width] [file_name]
>>> chipsec_util igd dmawrite <address> <width> <value|file_name>
```

### Examples:

```
>>> chipsec_util igd dmaread 0x20000000 4
>>> chipsec_util igd dmawrite 0x2217F1000 0x4 deadbeef
```

## interrupts\_cmd module

### SMI command:

```
>>> chipsec_util smi count
>>> chipsec_util smi send <thread_id> <SMI_code> <SMI_data> [RAX] [RBX] [RCX] [RDX] [RSI] [RDI]
>>> chipsec_util smi smmc <RT_code_start> <RT_code_end> <GUID> <payload_loc> <payload_file|payload_string> [port]
```

### Examples:

```
>>> chipsec_util smi count
>>> chipsec_util smi send 0x0 0xDE 0x0
>>> chipsec_util smi send 0x0 0xDE 0x0 0xAAAAAAAAAAAAAAAA ..
>>> chipsec_util smi smmc 0x79dfe000 0x79efdfff ed32d533-99e6-4209-9cc02d72cdd998a7 0x79dfaaaa payload.bin
```

### NMI command:

```
>>> chipsec_util nmi
```

### Examples:

## 24 - Module & Command Development

```
>>> chipsec_util nmi
```

### io\_cmd module

The io command allows direct access to read and write I/O port space.

```
>>> chipsec_util io list
>>> chipsec_util io read <io_port> <width>
>>> chipsec_util io write <io_port> <width> <value>
```

#### Examples:

```
>>> chipsec_util io list
>>> chipsec_util io read 0x61 1
>>> chipsec_util io write 0x430 1 0x0
```

### iommu\_cmd module

Command-line utility providing access to IOMMU engines

```
>>> chipsec_util iommu list
>>> chipsec_util iommu config [iommu_engine]
>>> chipsec_util iommu status [iommu_engine]
>>> chipsec_util iommu enable|disable <iommu_engine>
>>> chipsec_util iommu pt
```

#### Examples:

```
>>> chipsec_util iommu list
>>> chipsec_util iommu config VTD
>>> chipsec_util iommu status GFXVTD
>>> chipsec_util iommu enable VTD
>>> chipsec_util iommu pt
```

### lock\_check\_cmd module

```
>>> chipsec_util check list
>>> chipsec_util check lock <lockname>
>>> chipsec_util check lock <lockname1, lockname2, ...>
>>> chipsec_util check all
```

#### Examples:

```
>>> chipsec_util check list
>>> chipsec_util check lock DebugLock
>>> chipsec_util check all
```

#### KEY:

Lock Name - Name of Lock within configuration file State - Lock Configuration

Undefined - Lock is not defined within configuration Undoc - Lock is missing configuration information Hidden - Lock is in a disabled or hidden state (unable to read the lock) Unlocked - Lock does not match value within configuration Locked - Lock matches value within configuration RW/O - Lock is identified as register is RW/O



## mem\_cmd module

The mem command provides direct access to read and write physical memory.

```
>>> chipsec_util mem <op> <physical_address> <length> [value|buffer_file]
>>> <physical_address> : 64-bit physical address
>>> <op>                : read|readval|write|writeval|allocate|pagedump|search
>>> <length>            : byte|word|dword or length of the buffer from <buffer_file>
>>> <value>             : byte, word or dword value to be written to memory at <physical_address>
>>> <buffer_file>       : file with the contents to be written to memory at <physical_address>
```

Examples:

```
>>> chipsec_util mem <op> <physical_address> <length> [value|file]
>>> chipsec_util mem readval 0xFED40000 dword
>>> chipsec_util mem read 0x41E 0x20 buffer.bin
>>> chipsec_util mem writeval 0xA0000 dword 0x9090CCCC
>>> chipsec_util mem write 0x100000000 0x1000 buffer.bin
>>> chipsec_util mem write 0x100000000 0x10 000102030405060708090A0B0C0D0E0F
>>> chipsec_util mem allocate 0x1000
>>> chipsec_util mem pagedump 0xFED00000 0x100000
>>> chipsec_util mem search 0xF0000 0x10000 _SM_
```

## mmcfg\_base\_cmd module

The mmcfg\_base command displays PCIe MMCFG Base/Size.

Usage:

```
>>> chipsec_util mmcfg_base
```

Examples:

```
>>> chipsec_util mmcfg_base
```

## mmcfg\_cmd module

The mmcfg command allows direct access to memory mapped config space.

```
>>> chipsec_util mmcfg base
>>> chipsec_util mmcfg read <bus> <device> <function> <offset> <width>
>>> chipsec_util mmcfg write <bus> <device> <function> <offset> <width> <value>
>>> chipsec_util mmcfg ec
```

Examples:

```
>>> chipsec_util mmcfg base
>>> chipsec_util mmcfg read 0 0 0 0x200 4
>>> chipsec_util mmcfg write 0 0 0 0x200 1 0x1A
>>> chipsec_util mmcfg ec
```

## mmio\_cmd module

```
>>> chipsec_util mmio list
>>> chipsec_util mmio dump <MMIO_BAR_name> [offset] [length]
>>> chipsec_util mmio dump-abs <MMIO_base_address> [offset] [length]
>>> chipsec_util mmio read <MMIO_BAR_name> <offset> <width>
>>> chipsec_util mmio read-abs <MMIO_base_address> <offset> <width>
>>> chipsec_util mmio write <MMIO_BAR_name> <offset> <width> <value>
>>> chipsec_util mmio write-abs <MMIO_base_address> <offset> <width> <value>
```

Examples:

## 26 - Module & Command Development

```
>>> chipsec_util mmio list
>>> chipsec_util mmio dump MCHBAR
>>> chipsec_util mmio dump-abs 0xFE010000 0x70 0x10
>>> chipsec_util mmio read SPIBAR 0x74 0x4
>>> chipsec_util mmio read-abs 0xFE010000 0x74 0x04
>>> chipsec_util mmio write SPIBAR 0x74 0x4 0xFFFF0000
>>> chipsec_util mmio write-abs 0xFE010000 0x74 0x04 0xFFFF0000
```

### msgbus\_cmd module

```
>>> chipsec_util msgbus read <port> <register>
>>> chipsec_util msgbus write <port> <register> <value>
>>> chipsec_util msgbus mm_read <port> <register>
>>> chipsec_util msgbus mm_write <port> <register> <value>
>>> chipsec_util msgbus message <port> <register> <opcode> [value]
>>>
>>> <port> : message bus port of the target unit
>>> <register>: message bus register/offset in the target unit port
>>> <value> : value to be written to the message bus register/offset
>>> <opcode> : opcode of the message on the message bus
```

#### Examples:

```
>>> chipsec_util msgbus read 0x3 0x2E
>>> chipsec_util msgbus mm_write 0x3 0x27 0xE0000001
>>> chipsec_util msgbus message 0x3 0x2E 0x10
>>> chipsec_util msgbus message 0x3 0x2E 0x11 0x0
```

### msr\_cmd module

The msr command allows direct access to read and write MSRs.

```
>>> chipsec_util msr <msr> [eax] [edx] [thread_id]
```

#### Examples:

```
>>> chipsec_util msr 0x3A
>>> chipsec_util msr 0x3A 0x0
>>> chipsec_util msr 0x8B 0x0 0x0 0x0
```

### pci\_cmd module

The pci command can enumerate PCI/PCIe devices, enumerate expansion ROMs and allow direct access to PCI configuration registers via bus/device/function.

```
>>> chipsec_util pci enumerate
>>> chipsec_util pci read <bus> <device> <function> <offset> [width]
>>> chipsec_util pci write <bus> <device> <function> <offset> <width> <value>
>>> chipsec_util pci dump [<bus>] [<device>] [<function>]
>>> chipsec_util pci xrom [<bus>] [<device>] [<function>] [xrom_address]
>>> chipsec_util pci cmd [mask] [class] [subclass]
```

#### Examples:

```
>>> chipsec_util pci enumerate
>>> chipsec_util pci read 0 0 0 0x00
>>> chipsec_util pci read 0 0 0 0x88 byte
>>> chipsec_util pci write 0 0x1F 0 0xDC 1 0x1
>>> chipsec_util pci write 0 0 0 0x98 dword 0x004E0040
>>> chipsec_util pci dump
>>> chipsec_util pci dump 0 0 0
```

## 27 - Module & Command Development

```
>>> chipsec_util pci xrom
>>> chipsec_util pci xrom 3 0 0 0xFEDF0000
>>> chipsec_util pci cmd
>>> chipsec_util pci cmd 1
```

### reg\_cmd module

```
>>> chipsec_util reg read <reg_name> [<field_name>]
>>> chipsec_util reg read_field <reg_name> <field_name>
>>> chipsec_util reg write <reg_name> <value>
>>> chipsec_util reg write_field <reg_name> <field_name> <value>
>>> chipsec_util reg get_control <control_name>
>>> chipsec_util reg set_control <control_name> <value>
```

#### Examples:

```
>>> chipsec_util reg read SMBUS_VID
>>> chipsec_util reg read HSFC_FGO
>>> chipsec_util reg read_field HSFC_FGO
>>> chipsec_util reg write SMBUS_VID 0x8088
>>> chipsec_util reg write_field BC_BLE 0x1
>>> chipsec_util reg get_control BiosWriteEnable
>>> chipsec_util reg set_control BiosLockEnable 0x1
```

### smbios\_cmd module

```
>>> chipsec_util smbios entrypoint
>>> chipsec_util smbios get [raw|decoded] [type]
```

#### Examples:

```
>>> chipsec_util smbios entrypoint
>>> chipsec_util smbios get raw
```

### smbus\_cmd module

```
>>> chipsec_util smbus read <device_addr> <start_offset> [size]
>>> chipsec_util smbus write <device_addr> <offset> <byte_val>
```

#### Examples:

```
>>> chipsec_util smbus read 0xA0 0x0 0x100
```

### spd\_cmd module

```
>>> chipsec_util spd detect
>>> chipsec_util spd dump [device_addr]
>>> chipsec_util spd read <device_addr> <offset>
>>> chipsec_util spd write <device_addr> <offset> <byte_val>
```

#### Examples:

```
>>> chipsec_util spd detect
>>> chipsec_util spd dump DIMM0
>>> chipsec_util spd dump 0xA0
>>> chipsec_util spd read DIMM2 0x0
```

## 28 - Module & Command Development

```
>>> chipsec_util spd read 0xA0 0x0
>>> chipsec_util spd write 0xA0 0x0 0xAA
```

### spi\_cmd module

CHIPSEC includes functionality for reading and writing the SPI flash. When an image file is created from reading the SPI flash, this image can be parsed to reveal sections, files, variables, etc.

#### Warning

Particular care must be taken when using the SPI write and SPI erase functions. These could make your system unbootable.

A basic forensic operation might be to dump the entire SPI flash to a file. This is accomplished as follows:

```
# python chipsec_util.py spi dump rom.bin
```

The file rom.bin will contain the full binary of the SPI flash. It can then be parsed using the decode util command.

```
>>> chipsec_util spi info|dump|read|write|erase|disable-wp [flash_address] [length] [file]
```

#### Examples:

```
>>> chipsec_util spi info
>>> chipsec_util spi dump rom.bin
>>> chipsec_util spi read 0x700000 0x100000 bios.bin
>>> chipsec_util spi write 0x0 flash_descriptor.bin
>>> chipsec_util spi disable-wp
>>> chipsec_util spi sfdp
>>> chipsec_util spi jedec
>>> chipsec_util spi jedec decode
```

### spidesc\_cmd module

```
>>> chipsec_util spidesc <rom>
```

#### Examples:

```
>>> chipsec_util spidesc spi.bin
```

### tpm\_cmd module

```
>>> chipsec_util tpm parse_log <file>
>>> chipsec_util tpm state <locality>
>>> chipsec_util tpm command <commandName> <locality> <command_parameters>
```

locality: 0 | 1 | 2 | 3 | 4 commands - pccrread - pcr number ( 0 - 23 ) nvread - Index, Offset, Size  
startup - startup type ( 1 - 3 ) continueselftest getcap - Capabilities Area, Size of Sub-capabilities,  
Sub-capabilities forceclear

#### Examples:

```
>>> chipsec_util tpm parse_log binary_bios_measurements
>>> chipsec_util tpm state 0
```

## 29 - Module & Command Development

```
>>> chipsec_util tpm command pcrread 0 17
>>> chipsec_util tpm command continueselftest 0
```

### txt\_cmd module

Command-line utility providing access to Intel TXT (Trusted Execution Technology) registers

#### Usage:

```
>>> chipsec_util txt dump
>>> chipsec_util txt state
```

### ucode\_cmd module

```
>>> chipsec_util ucode id|load|decode [ucode_update_file (in .PDB or .BIN format)] [cpu_id]
```

#### Examples:

```
>>> chipsec_util ucode id
>>> chipsec_util ucode load ucode.bin 0
>>> chipsec_util ucode decode ucode.pdb
```

### uefi\_cmd module

The uefi command provides access to UEFI variables, both on the live system and in a SPI flash image file.

```
>>> chipsec_util uefi types
>>> chipsec_util uefi var-list
>>> chipsec_util uefi var-find <name>|<GUID>
>>> chipsec_util uefi var-read|var-write|var-delete <name> <GUID> <efi_variable_file>
>>> chipsec_util uefi decode <rom_file> [filetypes]
>>> chipsec_util uefi nvram[-auth] <rom_file> [fwtype]
>>> chipsec_util uefi keys <keyvar_file>
>>> chipsec_util uefi tables
>>> chipsec_util uefi s3bootscript [script_address]
>>> chipsec_util uefi assemble <GUID> freeform none|lzma|tiano <raw_file> <uefi_file>
>>> chipsec_util uefi insert_before|insert_after|replace|remove <GUID> <rom> <new_rom> <uefi_file>
```

#### Examples:

```
>>> chipsec_util uefi types
>>> chipsec_util uefi var-list
>>> chipsec_util uefi var-find PK
>>> chipsec_util uefi var-read db D719B2CB-3D3A-4596-A3BC-DAD00E67656F db.bin
>>> chipsec_util uefi var-write db D719B2CB-3D3A-4596-A3BC-DAD00E67656F db.bin
>>> chipsec_util uefi var-delete db D719B2CB-3D3A-4596-A3BC-DAD00E67656F
>>> chipsec_util uefi decode uefi.rom
>>> chipsec_util uefi decode uefi.rom FV_MM
>>> chipsec_util uefi nvram uefi.rom vss_auth
>>> chipsec_util uefi keys db.bin
>>> chipsec_util uefi tables
>>> chipsec_util uefi s3bootscript
>>> chipsec_util uefi assemble AAAAAAAA-BBBB-CCCC-DDDD-EEEEEEEEEEEE freeform lzma uefi.raw mydriver.efi
>>> chipsec_util uefi replace AAAAAAAA-BBBB-CCCC-DDDD-EEEEEEEEEEEE bios.bin new_bios.bin mydriver.efi
```

### vmem\_cmd module

The vmem command provides direct access to read and write virtual memory.

## 30 - Module & Command Development

```
>>> chipsec_util vmem <op> <physical_address> <length> [value|buffer_file]
>>>
>>> <physical_address> : 64-bit physical address
>>> <op>                : read|readval|write|writeval|allocate|pagedump|search|getphys
>>> <length>            : byte|word|dword or length of the buffer from <buffer_file>
>>> <value>             : byte, word or dword value to be written to memory at <physical_address>
>>> <buffer_file>       : file with the contents to be written to memory at <physical_address>
```

### Examples:

```
>>> chipsec_util vmem <op> <virtual_address> <length> [value|file]
>>> chipsec_util vmem readval 0xFED40000 dword
>>> chipsec_util vmem read 0x41E 0x20 buffer.bin
>>> chipsec_util vmem writeval 0xA0000 dword 0x9090CCCC
>>> chipsec_util vmem write 0x100000000 0x1000 buffer.bin
>>> chipsec_util vmem write 0x100000000 0x10 000102030405060708090A0B0C0D0E0F
>>> chipsec_util vmem allocate 0x1000
>>> chipsec_util vmem search 0xF0000 0x10000 _SM_
>>> chipsec_util vmem getphys 0xFED00000
```

### vmm\_cmd module

```
>>> chipsec_util vmm hypercall <rax> <rbx> <rcx> <rdx> <rdi> <rsi> [r8] [r9] [r10] [r11]
>>> chipsec_util vmm hypercall <eax> <ebx> <ecx> <edx> <edi> <esi>
>>> chipsec_util vmm pt|ept <ept_pointer>
>>> chipsec_util vmm virtio [<bus>:<device>.<function>]
```

### Examples:

```
>>> chipsec_util vmm hypercall 32 0 0 0 0 0
>>> chipsec_util vmm pt 0x524B01E
>>> chipsec_util vmm virtio
>>> chipsec_util vmm virtio 0:6.0
```

## HAL (Hardware Abstraction Layer)

Useful abstractions for common tasks such as accessing the SPI.

### hal package

#### acpi module

HAL component providing access to and decoding of ACPI tables

#### acpi\_tables module

HAL component decoding various ACPI tables

### cmos module

CMOS memory specific functions (dump, read/write)

#### usage:

```
>>> cmos.dump_low()  
>>> cmos.dump_high()  
>>> cmos.dump()  
>>> cmos.read_cmos_low( offset )  
>>> cmos.write_cmos_low( offset, value )  
>>> cmos.read_cmos_high( offset )  
>>> cmos.write_cmos_high( offset, value )
```

### cpu module

CPU related functionality

### cpuid module

CPUID information

#### usage:

```
>>> cpuid(0)
```

### ec module

Access to Embedded Controller (EC)

#### Usage:

```
>>> write_command( command )  
>>> write_data( data )  
>>> read_data()  
>>> read_memory( offset )  
>>> write_memory( offset, data )  
>>> read_memory_extended( word_offset )  
>>> write_memory_extended( word_offset, data )  
>>> read_range( start_offset, size )  
>>> write_range( start_offset, buffer )
```

### hal\_base module

Base for HAL Components

### igd module

Working with Intel processor Integrated Graphics Device (IGD)

#### usage:

```
>>> gfx_aperture_dma_read(0x80000000, 0x100)
```

### interrupts module

Functionality encapsulating interrupt generation CPU Interrupts specific functions (SMI, NMI)

#### usage:

```
>>> send_SMI_APMC( 0xDE )
>>> send_NMI()
```

### io module

Access to Port I/O

#### usage:

```
>>> read_port_byte( 0x61 )
>>> read_port_word( 0x61 )
>>> read_port_dword( 0x61 )
>>> write_port_byte( 0x71, 0 )
>>> write_port_word( 0x71, 0 )
>>> write_port_dword( 0x71, 0 )
```

### io\_bar module

I/O BAR access (dump, read/write)

#### usage:

```
>>> get_IO_BAR_base_address( bar_name )
>>> read_IO_BAR_reg( bar_name, offset, size )
>>> write_IO_BAR_reg( bar_name, offset, size, value )
>>> dump_IO_BAR( bar_name )
```

### iommu module

Access to IOMMU engines

### locks module

### mmio module

Access to MMIO (Memory Mapped IO) BARs and Memory-Mapped PCI Configuration Space (MMCFG)

#### usage:

```
>>> read_MMIO_reg(cs, bar_base, 0x0, 4)
>>> write_MMIO_reg(cs, bar_base, 0x0, 0xFFFFFFFF, 4)
>>> read_MMIO(cs, bar_base, 0x1000)
>>> dump_MMIO(cs, bar_base, 0x1000)
```

Access MMIO by BAR name:

```
>>> read_MMIO_BAR_reg(cs, 'MCHBAR', 0x0, 4)
>>> write_MMIO_BAR_reg(cs, 'MCHBAR', 0x0, 0xFFFFFFFF, 4)
>>> get_MMIO_BAR_base_address(cs, 'MCHBAR')
>>> is_MMIO_BAR_enabled(cs, 'MCHBAR')
```



### 33 - Module & Command Development

```
>>> is_MMIO_BAR_programmed(cs, 'MCHBAR')
>>> dump_MMIO_BAR(cs, 'MCHBAR')
>>> list_MMIO_BARS(cs)
```

#### Access Memory Mapped Config Space:

```
>>> get_MMCFG_base_address(cs)
>>> read_mmcfg_reg(cs, 0, 0, 0, 0x10, 4)
>>> read_mmcfg_reg(cs, 0, 0, 0, 0x10, 4, 0xFFFFFFFF)
```

#### msgbus module

Access to message bus (IOSF sideband) interface registers on Intel SoCs

References:

- Intel(R) Atom(TM) Processor D2000 and N2000 Series Datasheet, Volume 2, July 2012, Revision 003 <http://www.intel.com/content/dam/doc/datasheet/atom-d2000-n2000-vol-2-datasheet.pdf> (section 1.10.2)

**usage:**

```
>>> msgbus_reg_read( port, register )
>>> msgbus_reg_write( port, register, data )
>>> msgbus_read_message( port, register, opcode )
>>> msgbus_write_message( port, register, opcode, data )
>>> msgbus_send_message( port, register, opcode, data )
```

#### msr module

Access to CPU resources (for each CPU thread): Model Specific Registers (MSR), IDT/GDT

**usage:**

```
>>> read_msr( 0x8B )
>>> write_msr( 0x79, 0x12345678 )
>>> get_IDTR( 0 )
>>> get_GDTR( 0 )
>>> dump_Descriptor_Table( 0, DESCRIPTOR_TABLE_CODE_IDTR )
>>> IDT( 0 )
>>> GDT( 0 )
>>> IDT_all()
>>> GDT_all()
```

#### paging module

x64/IA-64 Paging functionality including x86 page tables, Extended Page Tables (EPT) and VT-d page tables

#### pci module

Access to of PCI/PCIe device hierarchy - enumerating PCI/PCIe devices - read/write access to PCI configuration headers/registers - enumerating PCI expansion (option) ROMs - identifying PCI/PCIe devices MMIO and I/O ranges (BARs)

**usage:**

## 34 - Module & Command Development

```
>>> self.cs.pci.read_byte( 0, 0, 0, 0x88 )
>>> self.cs.pci.write_byte( 0, 0, 0, 0x88, 0x1A )
>>> self.cs.pci.enumerate_devices()
>>> self.cs.pci.enumerate_xroms()
>>> self.cs.pci.find_XROM( 2, 0, 0, True, True, 0xFED00000 )
>>> self.cs.pci.get_deviceBars( 2, 0, 0 )
>>> self.cs.pci.get_DIDVID( 2, 0, 0 )
>>> self.cs.pci.is_enabled( 2, 0, 0 )
```

### pcidb module

PCI Vendor & Device ID data.

#### Note

THIS FILE WAS GENERATED

Auto generated from:

<https://github.com/pciutils/pciids>

### physmem module

Access to physical memory

#### usage:

```
>>> read_physical_mem( 0xf0000, 0x100 )
>>> write_physical_mem( 0xf0000, 0x100, buffer )
>>> write_physical_mem_dowrd( 0xf0000, 0xdeadbeef )
>>> read_physical_mem_dowrd( 0xfed40000 )
```

### smbios module

HAL component providing access to and decoding of SMBIOS structures

### smbus module

Access to SMBus Controller

### spd module

Access to Memory (DRAM) Serial Presence Detect (SPD) EEPROM

References:

[http://www.jedec.org/sites/default/files/docs/4\\_01\\_02R19.pdf](http://www.jedec.org/sites/default/files/docs/4_01_02R19.pdf)

[http://www.jedec.org/sites/default/files/docs/4\\_01\\_02\\_10R17.pdf](http://www.jedec.org/sites/default/files/docs/4_01_02_10R17.pdf)

[http://www.jedec.org/sites/default/files/docs/4\\_01\\_02\\_11R24.pdf](http://www.jedec.org/sites/default/files/docs/4_01_02_11R24.pdf)

[http://www.jedec.org/sites/default/files/docs/4\\_01\\_02\\_12R23A.pdf](http://www.jedec.org/sites/default/files/docs/4_01_02_12R23A.pdf)

<https://www.simmtester.com/News/PublicationArticle/184>

<https://www.simmtester.com/News/PublicationArticle/153>

<https://www.simmtester.com/News/PublicationArticle/101> [http://en.wikipedia.org/wiki/Serial\\_presence\\_detect](http://en.wikipedia.org/wiki/Serial_presence_detect)

#### spi module

Access to SPI Flash parts

##### usage:

```
>>> read_spi( spi_flg, length )
>>> write_spi( spi_flg, buf )
>>> erase_spi_block( spi_flg )
>>> get_SPI_JEDEC_ID()
>>> get_SPI_JEDEC_ID_decoded()
```

#### Note

!! IMPORTANT: Size of the data chunk used in SPI read cycle (in bytes) default = maximum 64 bytes (remainder is read in 4 byte chunks)

If you want to change logic to read SPI Flash in 4 byte chunks: SPI\_READ\_WRITE\_MAX\_DBC = 4

@TBD: SPI write cycles operate on 4 byte chunks (not optimized yet)

Approximate performance (on 2-core SMT Intel Core i5-4300U (Haswell) CPU 1.9GHz): SPI read: ~7 sec per 1MB (with DBC=64)

#### spi\_descriptor module

SPI Flash Descriptor binary parsing functionality

##### usage:

```
>>> fd = read_file( fd_file )
>>> parse_spi_flash_descriptor( fd )
```

#### spi\_jedec\_ids module

JEDED ID : Manufacturers and Device IDs

#### spi\_uefi module

UEFI firmware image parsing and manipulation functionality

##### usage:

```
>>> parse_uefi_region_from_file(_uefi, filename, fwtype, outpath):
```

#### tpm module

Trusted Platform Module (TPM) HAL component

<https://trustedcomputinggroup.org>

#### tpm12\_commands module

Definition for TPMv1.2 commands to use with TPM HAL

TCG PC Client TPM Specification TCG TPM v1.2 Specification

#### tpm\_eventlog module

Trusted Platform Module Event Log

Based on the following specifications:

[TCG EFI Platform Specification For TPM Family 1.1 or 1.2](#)

[TCG PC Client Specific Implementation Specification for Conventional BIOS", version 1.21](#)

[TCG EFI Protocol Specification, Family "2.0"](#)

[TCG PC Client Platform Firmware Profile Specification](#)

#### ucode module

Microcode update specific functionality (for each CPU thread)

**usage:**

```
>>> ucode_update_id( 0 )
>>> load_ucode_update( 0, ucode_buf )
>>> update_ucode_all_cpus( 'ucode.pdb' )
>>> dump_ucode_update_header( 'ucode.pdb' )
```

#### uefi module

Main UEFI component using platform specific and common UEFI functionality

#### uefi\_common module

Common UEFI/EFI functionality including UEFI variables, Firmware Volumes, Secure Boot variables, S3 boot-script, UEFI tables, etc.

## 37 - Module & Command Development

uefi\_compression module

uefi\_fv module

UEFI Firmware Volume Parsing/Modification Functionality

uefi\_platform module

Platform specific UEFI functionality (parsing platform specific EFI NVRAM, capsules, etc.)

uefi\_search module

UEFI image search auxillary functionality

**usage:**

```
>>> chipsec.hal.uefi_search.check_match_criteria(efi_module, match_criteria, self.logger)
```

virtmem module

Access to virtual memory

**usage:**

```
>>> read_virtual_mem( 0xf0000, 0x100 )
>>> write_virtual_mem( 0xf0000, 0x100, buffer )
>>> write_virtual_mem_dowrd( 0xf0000, 0xdeadbeef )
>>> read_virtual_mem_dowrd( 0xfed40000 )
```

vmm module

VMM specific functionality 1. Hypervisor hypercall interfaces 2. Second-level Address Translation (SLAT) 3. VirtIO devices 4. ...

## Fuzzing

fuzzing package

primitives module

## CHIPSEC\_MAIN Program Flow

1. Select [OS Helpers and Drivers](#)
  - Load Driver (optional)
2. [Detect Platform](#)
3. Load [Configuration Files](#)
4. Load Modules
5. Run Loaded Modules
6. Report Results
7. Cleanup

### CHIPSEC\_UTIL Program Flow

1. Select [OS Helpers and Drivers](#)
  - Load Driver (optional)
2. [Detect Platform](#)
3. Load [Configuration Files](#)
4. Load Utility Commands
5. Run Selected Command
6. Cleanup

### Auxiliary components

- `setup.py` setup script to install CHIPSEC as a package

### Executable build scripts

- `<CHIPSEC_ROOT>/scripts/build_exe_*.py` make files to build Windows executables

## Configuration Files

Provide a human readable abstraction for registers in the system

<code>chipsec/cfg/8086</code>	platform specific configuration xml files
<code>chipsec/cfg/8086/common.xml</code>	common configuration
<code>chipsec/cfg/8086/&lt;platform&gt;.xml</code>	configuration for a specific <platform>

Broken into common and platform specific configuration files.

Used to define controls, registers and bit fields.

Common files always loaded first so the platform files can override values.

Correct platform configuration files loaded based off of platform detection.

### Configuration File Example

```
<mmio>
<bar name="SPIBAR" bus="0" dev="0x1F" fun="5" reg="0x10" width="4" mask="0xFFFFF000" size="0x1000" desc="SPI Controller Register Range" offset="0x0"/>
</mmio>
<registers>
<register name="BC" type="pcicfg" bus="0" dev="0x1F" fun="5" offset="0xDC" size="4" desc="BIOS Control">
<field name="BIOSWE" bit="0" size="1" desc="BIOS Write Enable" />
...
<field name="BILD" bit="7" size="1" desc="BIOS Interface Lock Down"/>
</register>
</registers>
<controls>
<control name="BiosInterfaceLockDown" register="BC" field="BILD" desc="BIOS Interface Lock-Down"/>
</controls>
```

### List of Cfg components

#### skx

Path: chipsec\cfg\8086\skx.xml

XML configuration file for Skylake/Purely Server Intel (c) Xeon Processor Scalable Family datasheet Vol. 2

#### txt

Path: chipsec\cfg\8086\txt.xml

Configuration of Intel TXT register, following the guide:

Intel® Trusted Execution Technology: Software Development Guide Measured Launched Environment Developer's Guide August 2016 Revision 013

from <https://web.archive.org/web/20170506220426/https://www.intel.com/content/www/us/en/software-developers/intel-txt-software-development-guide.html> (and <https://usermanual.wiki/Document/inteltxtsoftwaredevelopmentguide.1721028921> )

Appendix B.1. (Intel® TXT Configuration Registers) details:

These registers are mapped into two regions of memory, representing the public and private configuration spaces. [...] The private space registers are mapped to the address range starting at FED20000H. The public space registers are mapped to the address range starting at FED30000H.

As chipsec usually runs in environments where the private space is not available, only the public space registers were described here.

#### kbl

Path: chipsec\cfg\8086\kbl.xml

XML configuration file for Kaby Lake based platforms

<http://www.intel.com/content/www/us/en/processors/core/core-technical-resources.html>

- 7th Generation Intel(R) Processor Families for U/Y-Platforms
- 7th Generation Intel(R) Processor Families I/O for U/Y-Platforms

#### ehl

Path: chipsec\cfg\8086\ehl.xml

XML configuration file for Elkhart Lake Document ID: 635255, 636112, 636722, 636723

#### sfdp

Path: chipsec\cfg\8086\sfdp.xml

XML configuration for Serial Flash Discoverable Parameter feature document:

<https://www.jedec.org/system/files/docs/JESD216D-01.pdf>

#### glk

Path: chipsec\cfg\8086\glk.xml

##### **XML configuration for GLK**

Document ID: 336561-001

#### pch\_4xxh

Path: chipsec\cfg\8086\pch\_4xxh.xml

XML configuration file 4xxH PCH 620855

#### bdw

Path: chipsec\cfg\8086\bdw.xml

XML configuration for Broadwell based platforms

#### pch\_4xx

Path: chipsec\cfg\8086\pch\_4xx.xml

XML configuration file for 4XX pch



#### pch\_c60x

Path: chipsec\cfg\8086\pch\_c60x.xml

##### **XML configuration file for C600 series PCH**

Intel (c) C600 Series Chipset and Intel (c) X79 Express Chipset datasheet Intel (c) C600 Series Chipset and Intel (c) X79 Express Chipset Specification Update

<https://ark.intel.com/products/series/98463/Intel-C600-Series-Chipsets>

#### qrk

Path: chipsec\cfg\8086\qrk.xml

XML configuration for Quark based platforms

#### pch\_5xxh

Path: chipsec\cfg\8086\pch\_5xxh.xml

XML configuration file for 5XXH series pch

#### pch\_495

Path: chipsec\cfg\8086\pch\_495.xml

XML configuration file for the 495 series PCH

#### bdx

Path: chipsec\cfg\8086\bdx.xml

XML configuration file for Broadwell Server based platforms Intel (c) Xeon Processor E5 v4 Product Family datasheet Vol. 2 Intel (c) Xeon Processor E7 v4 Product Family datasheet Vol. 2 Intel (c) C600 Series Chipset and Intel (c) X79 Express Chipset datasheet Intel (c) C600 Series Chipset and Intel (c) X79 Express Chipset Specification Update Intel (c) C610 Series Chipset and Intel (c) X99 Chipset Platform Controller Hub (PCH) datasheet

#### icx

Path: chipsec\cfg\8086\icx.xml

XML configuration file for Icelake/Lewisburg Server

#### rkl

Path: chipsec\cfg\8086\rkl.xml

CHIPSEC: Platform Security Assessment Framework Copyright (c) 2021, Intel Corporation

This program is free software; you can redistribute it and/or modify it under the terms of the GNU General Public License as published by the Free Software Foundation; Version 2.

This program is distributed in the hope that it will be useful, but WITHOUT ANY WARRANTY; without even the implied warranty of MERCHANTABILITY or FITNESS FOR A PARTICULAR PURPOSE. See the GNU General Public License for more details.

You should have received a copy of the GNU General Public License along with this program; if not, write to the Free Software Foundation, Inc., 51 Franklin Street, Fifth Floor, Boston, MA 02110-1301, USA.

Contact information: [chipsec@intel.com](mailto:chipsec@intel.com)

### apl

Path: chipsec\cfg\8086\apl.xml

XML configuration for Apollo Lake based SoCs document id 334818/334819

### snb

Path: chipsec\cfg\8086\snb.xml

XML configuration for Sandy Bridge based platforms

### pch\_8x

Path: chipsec\cfg\8086\pch\_8x.xml

CHIPSEC: Platform Security Assessment Framework Copyright (c) 2022, Intel Corporation

This program is free software; you can redistribute it and/or modify it under the terms of the GNU General Public License as published by the Free Software Foundation; Version 2.

This program is distributed in the hope that it will be useful, but WITHOUT ANY WARRANTY; without even the implied warranty of MERCHANTABILITY or FITNESS FOR A PARTICULAR PURPOSE. See the GNU General Public License for more details.

You should have received a copy of the GNU General Public License along with this program; if not, write to the Free Software Foundation, Inc., 51 Franklin Street, Fifth Floor, Boston, MA 02110-1301, USA.

Contact information: [chipsec@intel.com](mailto:chipsec@intel.com)

### pch\_6xxS

Path: chipsec\cfg\8086\pch\_6xxS.xml

CHIPSEC: Platform Security Assessment Framework Copyright (c) 2021-2022, Intel Corporation

This program is free software; you can redistribute it and/or modify it under the terms of the GNU General Public License as published by the Free Software Foundation; Version 2.

This program is distributed in the hope that it will be useful, but WITHOUT ANY WARRANTY; without even the implied warranty of MERCHANTABILITY or FITNESS FOR A PARTICULAR PURPOSE. See the GNU General Public License for more details.

## 43 - Module & Command Development

You should have received a copy of the GNU General Public License along with this program; if not, write to the Free Software Foundation, Inc., 51 Franklin Street, Fifth Floor, Boston, MA 02110-1301, USA.

Contact information: [chipsec@intel.com](mailto:chipsec@intel.com)

### pch\_1xx

Path: chipsec\cfg\8086\pch\_1xx.xml

XML configuration file for 100 series PCH based platforms

CHIPSEC: Platform Security Assessment Framework Copyright (c) 2020-2021, Intel Corporation

This program is free software; you can redistribute it and/or modify it under the terms of the GNU General Public License as published by the Free Software Foundation; Version 2.

This program is distributed in the hope that it will be useful, but WITHOUT ANY WARRANTY; without even the implied warranty of MERCHANTABILITY or FITNESS FOR A PARTICULAR PURPOSE. See the GNU General Public License for more details.

You should have received a copy of the GNU General Public License along with this program; if not, write to the Free Software Foundation, Inc., 51 Franklin Street, Fifth Floor, Boston, MA 02110-1301, USA.

Contact information: [chipsec@intel.com](mailto:chipsec@intel.com)

- Intel(R) 100 Series Chipset Family Platform Controller Hub (PCH)  
<http://www.intel.com/content/www/us/en/processors/core/core-technical-resources.html>

### ivt

Path: chipsec\cfg\8086\ivt.xml

XML configuration file for Ivytown (Ivy Bridge-E) based platforms

### pch\_6xxP

Path: chipsec\cfg\8086\pch\_6xxP.xml

CHIPSEC: Platform Security Assessment Framework Copyright (c) 2021-2022, Intel Corporation

This program is free software; you can redistribute it and/or modify it under the terms of the GNU General Public License as published by the Free Software Foundation; Version 2.

This program is distributed in the hope that it will be useful, but WITHOUT ANY WARRANTY; without even the implied warranty of MERCHANTABILITY or FITNESS FOR A PARTICULAR PURPOSE. See the GNU General Public License for more details.

You should have received a copy of the GNU General Public License along with this program; if not, write to the Free Software Foundation, Inc., 51 Franklin Street, Fifth Floor, Boston, MA 02110-1301, USA.

Contact information: [chipsec@intel.com](mailto:chipsec@intel.com)

### adl

Path: chipsec\cfg\8086\adl.xml

CHIPSEC: Platform Security Assessment Framework Copyright (c) 2021-2022, Intel Corporation

This program is free software; you can redistribute it and/or modify it under the terms of the GNU General Public License as published by the Free Software Foundation; Version 2.

This program is distributed in the hope that it will be useful, but WITHOUT ANY WARRANTY; without even the implied warranty of MERCHANTABILITY or FITNESS FOR A PARTICULAR PURPOSE. See the GNU General Public License for more details.

You should have received a copy of the GNU General Public License along with this program; if not, write to the Free Software Foundation, Inc., 51 Franklin Street, Fifth Floor, Boston, MA 02110-1301, USA.

Contact information: [chipsec@intel.com](mailto:chipsec@intel.com)

#### cht

Path: chipsec\cfg\8086\cht.xml

XML configuration for Cherry Trail and Braswell SoCs

- Intel(R) Atom(TM) Processor Z8000 series datasheet  
<http://www.intel.com/content/www/us/en/processors/atom/atom-z8000-datasheet-vol-2.html>
- N-series Intel(R) Pentium(R) and Celeron(R) Processors Datasheet  
<http://www.intel.com/content/dam/www/public/us/en/documents/datasheets/pentium-celeron-n-series-datasheet-vol-2.pdf>

#### pch\_2xx

Path: chipsec\cfg\8086\pch\_2xx.xml

XML configuration file for 200 series PCH based platforms

- Intel(R) 200 Series Chipset Family Platform Controller Hub (PCH)  
<http://www.intel.com/content/www/us/en/processors/core/core-technical-resources.html>

#### avn

Path: chipsec\cfg\8086\avn.xml

XML configuration for Avoton based platforms

- Intel(R) Atom(TM) Processor C2000 Product Family for Microserver, September 2014  
<http://www.intel.com/content/www/us/en/processors/atom/atom-c2000-microserver-datasheet.html>

#### ivb

Path: chipsec\cfg\8086\ivb.xml

XML configuration for IvyBridge based platforms

#### cml

Path: chipsec\cfg\8086\cml.xml

XML configuration file for Comet Lake

rpl

Path: chipsec\cfg\8086\rpl.xml

CHIPSEC: Platform Security Assessment Framework Copyright (c) 2022, Intel Corporation

This program is free software; you can redistribute it and/or modify it under the terms of the GNU General Public License as published by the Free Software Foundation; Version 2.

This program is distributed in the hope that it will be useful, but WITHOUT ANY WARRANTY; without even the implied warranty of MERCHANTABILITY or FITNESS FOR A PARTICULAR PURPOSE. See the GNU General Public License for more details.

You should have received a copy of the GNU General Public License along with this program; if not, write to the Free Software Foundation, Inc., 51 Franklin Street, Fifth Floor, Boston, MA 02110-1301, USA.

Contact information: [chipsec@intel.com](mailto:chipsec@intel.com)

pch\_4xxlp

Path: chipsec\cfg\8086\pch\_4xxlp.xml

XML configuration file for the 400 series LP (U/H) PCH

byt

Path: chipsec\cfg\8086\byt.xml

XML configuration for Bay Trail based platforms

- Intel(R) Atom(TM) Processor E3800 Product Family Datasheet, May 2016, Revision 4.0  
<http://www.intel.com/content/www/us/en/embedded/products/bay-trail/atom-e3800-family-datasheet.html>

tpm12

Path: chipsec\cfg\8086\tpm12.xml

CHIPSEC: Platform Security Assessment Framework Copyright (c) 2021, Intel Corporation

This program is free software; you can redistribute it and/or modify it under the terms of the GNU General Public License as published by the Free Software Foundation; Version 2.

This program is distributed in the hope that it will be useful, but WITHOUT ANY WARRANTY; without even the implied warranty of MERCHANTABILITY or FITNESS FOR A PARTICULAR PURPOSE. See the GNU General Public License for more details.

You should have received a copy of the GNU General Public License along with this program; if not, write to the Free Software Foundation, Inc., 51 Franklin Street, Fifth Floor, Boston, MA 02110-1301, USA.

Contact information: [chipsec@intel.com](mailto:chipsec@intel.com)

## pch\_7x

Path: chipsec\cfg\8086\pch\_7x.xml

CHIPSEC: Platform Security Assessment Framework Copyright (c) 2022, Intel Corporation

This program is free software; you can redistribute it and/or modify it under the terms of the GNU General Public License as published by the Free Software Foundation; Version 2.

This program is distributed in the hope that it will be useful, but WITHOUT ANY WARRANTY; without even the implied warranty of MERCHANTABILITY or FITNESS FOR A PARTICULAR PURPOSE. See the GNU General Public License for more details.

You should have received a copy of the GNU General Public License along with this program; if not, write to the Free Software Foundation, Inc., 51 Franklin Street, Fifth Floor, Boston, MA 02110-1301, USA.

Contact information: [chipsec@intel.com](mailto:chipsec@intel.com)

## pmc\_i440fx

Path: chipsec\cfg\8086\pmc\_i440fx.xml

XML configuration file for Intel 440FX PCI and Memory Controller (PMC). It is used by QEMU "pc" machine, implemented in <https://github.com/qemu/qemu/blob/v7.0.0/hw/pci-host/i440fx.c>

A datasheet is available on <https://wiki.qemu.org/File:29054901.pdf>

## whl

Path: chipsec\cfg\8086\whl.xml

XML configuration file for Whiskey Lake

**8th Generation Intel(R) Processor Family for U-Processor Platforms:**

- <https://www.intel.com/content/www/us/en/processors/core/core-technical-resources.html>
- <https://www.intel.com/content/dam/www/public/us/en/documents/technical-specifications/300-series-chipset-on-p>

## hsx

Path: chipsec\cfg\8086\hsx.xml

XML configuration file for Haswell Server based platforms Intel (c) Xeon Processor E5-1600/2400/2600/4600 v3 Product Family datasheet Vol. 2 Intel (c) Xeon Processor E7-8800/4800 v3 Product Family datasheet Vol. 2 Intel (c) C600 Series Chipset and Intel (c) X79 Express Chipset datasheet Intel (c) C600 Series Chipset and Intel (c) X79 Express Chipset Specification Update Intel (c) C610 Series Chipset and Intel (c) X99 Chipset Platform Controller Hub (PCH) datasheet

## pch\_c61x

Path: chipsec\cfg\8086\pch\_c61x.xml

**XML configuration file for C610 series PCH**

Intel (c) C610 Series Chipset and Intel (c) X99 Chipset Platform Controller Hub (PCH) datasheet  
<https://ark.intel.com/products/series/98915/Intel-C610-Series-Chipsets>

#### cfl

Path: chipsec\cfg\8086\cfl.xml

XML configuration file for Coffee Lake

- 8th Generation Intel(R) Processor Family for S-Processor Platforms  
<https://www.intel.com/content/www/us/en/processors/core/core-technical-resources.html>

#### pch\_5xxlp

Path: chipsec\cfg\8086\pch\_5xxlp.xml

XML configuration file for 5XXLP series pch

#### pch\_3xxop

Path: chipsec\cfg\8086\pch\_3xxop.xml

XML configuration file for the 300 series On Package PCH <https://www.intel.com/content/www/us/en/product-s/docs/chipsets/300-series-chipset-on-package-pch-datasheet-vol-2.html> 337868-002

#### dnv

Path: chipsec\cfg\8086\dnv.xml

XML configuration file for Denverton

- Intel Atom(R) Processor C3000 Product Family  
<https://www.intel.com/content/www/us/en/processors/atom/atom-technical-resources.html> 337018-002

#### jkt

Path: chipsec\cfg\8086\jkt.xml

XML configuration file for Jaketown (Sandy Bridge-E) based platforms

#### iommu

Path: chipsec\cfg\8086\iommu.xml

XML configuration file for Intel Virtualization Technology for Directed I/O (VT-d)

- Section 10 of Intel Virtualization Technology for Directed I/O  
<http://www.intel.com/content/dam/www/public/us/en/documents/product-specifications/vt-directed-io-spec.pdf>

#### tglu

Path: chipsec\cfg\8086\tglu.xml

CHIPSEC: Platform Security Assessment Framework Copyright (c) 2021, Intel Corporation

This program is free software; you can redistribute it and/or modify it under the terms of the GNU General Public License as published by the Free Software Foundation; Version 2.

This program is distributed in the hope that it will be useful, but WITHOUT ANY WARRANTY; without even the implied warranty of MERCHANTABILITY or FITNESS FOR A PARTICULAR PURPOSE. See the GNU General Public License for more details.

You should have received a copy of the GNU General Public License along with this program; if not, write to the Free Software Foundation, Inc., 51 Franklin Street, Fifth Floor, Boston, MA 02110-1301, USA.

Contact information: [chipsec@intel.com](mailto:chipsec@intel.com)

#### tglh

Path: chipsec\cfg\8086\tglh.xml

CHIPSEC: Platform Security Assessment Framework Copyright (c) 2022, Intel Corporation

This program is free software; you can redistribute it and/or modify it under the terms of the GNU General Public License as published by the Free Software Foundation; Version 2.

This program is distributed in the hope that it will be useful, but WITHOUT ANY WARRANTY; without even the implied warranty of MERCHANTABILITY or FITNESS FOR A PARTICULAR PURPOSE. See the GNU General Public License for more details.

You should have received a copy of the GNU General Public License along with this program; if not, write to the Free Software Foundation, Inc., 51 Franklin Street, Fifth Floor, Boston, MA 02110-1301, USA.

Contact information: [chipsec@intel.com](mailto:chipsec@intel.com)

#### pch\_3xx

Path: chipsec\cfg\8086\pch\_3xx.xml

XML configuration file for the 300 series PCH <https://www.intel.com/content/www/us/en/products/docs/chipsets/300-series-chipset-pch-datasheet-vol-2.html> 337348-001

#### icl

Path: chipsec\cfg\8086\icl.xml

XML configuration file for Ice Lake

#### skl

Path: chipsec\cfg\8086\skl.xml

XML configuration file for Skylake based platforms

<http://www.intel.com/content/www/us/en/processors/core/core-technical-resources.html>



- 6th Generation Intel(R) Processor Datasheet for U/Y-Platforms
- 6th Generation Intel(R) Processor I/O Datasheet for U/Y-Platforms
- 6th Generation Intel(R) Processor Datasheet for S-Platforms
- 6th Generation Intel(R) Processor Datasheet for H-Platforms
- Intel(R) 100 Series Chipset Family Platform Controller Hub (PCH)

#### pch\_c620

Path: chipsec\cfg\8086\pch\_c620.xml

XML configuration file for

- Intel(R) C620 Series Chipset Family Platform Controller Hub  
<https://www.intel.com/content/dam/www/public/us/en/documents/datasheets/c620-series-chipset-datasheet.pdf>

#### hsw

Path: chipsec\cfg\8086\hsw.xml

XML configuration file for Haswell based platforms

#### common

Path: chipsec\cfg\8086\common.xml

Common (default) XML platform configuration file

#### pch\_3xxlp

Path: chipsec\cfg\8086\pch\_3xxlp.xml

XML configuration file for the 300 series LP (U/Y) PCH <https://www.intel.com/content/www/us/en/products/docs/processors/core/7th-and-8th-gen-core-family-mobile-u-y-processor-lines-i-o-datasheet-vol-2.html>  
334659-005

## Writing Your Own Modules

Your module class should subclass `BaseModule` and implement at least the methods named `is_supported` and `run`. When `chipsec_main` runs, it will first run `is_supported` and if that returns true, then it will call `run`.

As of CHIPSEC version 1.2.0, CHIPSEC implements an abstract name for platform *controls*. Module authors are encouraged to create controls in the XML configuration files for important platform configuration information and then use `get_control` and `set_control` within modules. This abstraction allows modules to test for the abstract control without knowing which register provides it. (This is especially important for test reuse across platform generations.)

Most modules read some platform configuration and then pass or fail based on the result. For example:

1. Define the control in the platform XML file (in `chipsec/cfg`):

```
<control name="BiosLockEnable" register="BC" field="BLE" desc="BIOS Lock Enable"/>
```

2. Get the current status of the control:

```
ble = self.cs.get_control('BiosLockEnable')
```

3. React based on the status of the control:

```
if ble:
    self.logger.log_passed("BIOS Lock is set.")
else:
    self.logger.log_failed("BIOS Lock is not set.")
```

4. Set and Return `self.res`:

```
if ble:
    self.res = ModuleResult.PASSED
else:
    self.res = ModuleResult.FAILED
return self.res
```

The CHIPSEC HAL and other APIs are also available within these modules. See the next sections for details about the available functionality.

Copy your module into the `chipsec/modules/` directory structure.

- Modules specific to a certain platform should implement `is_supported` function which returns `True` for the platforms the module is applicable to.
- Modules specific to a certain platform can also be located in `chipsec/modules/<platform_code>` directory, for example `chipsec/modules/hsw`. Supported platforms and their code can be found by running `chipsec_main.py --help`.
- Modules common to all platform which CHIPSEC supports can be located in `chipsec/modules/common` directory.

If a new platform needs to be added:

- Review the platform datasheet and include appropriate information in an XML configuration file for the platform. Place this file in `chipsec/cfg/8086`. Registers that are correctly defined in `common.xml` will be inherited and do not need to be added. Use `common.xml` as an example. It is based on the 4th Generation Intel Core platform (Haswell).

## Seealso

[Creating CHIPSEC modules and commands](#)

## OS Helpers and Drivers

Provide common interfaces to interact with system drivers/commands

## Mostly invoked by HAL modules

Directly invoking helpers from modules should be minimized

## Helpers import from BaseHelper

Override applicable functions – default is to generate exception

I/O, PCI, MSR, UEFI Variables, etc.

## Create a New Helper

Helper needs to be added into the helper folder with a folder structure like:

chipsec/helper/<type>/<type>helper.py

### Example

The new helper should be added to `chipsec/helper/new/newhelper.py` and should import from Helper Base Class

```
from chipsec.helper.basehelper import Helper
class NewHelper(Helper):

    def __init__(self):
        super(NewHelper, self).__init__()
        self.name = "NewHelper"
```

## Helper components

helper package

dal package

dalhelper module

Intel DFX Abstraction Layer (DAL) helper

From the Intel(R) DFX Abstraction Layer Python\* Command Line Interface User Guide

efi package

efihelper module

On UEFI use the efi package functions

## 52 - Module & Command Development

linux package

linuxhelper module

Linux helper

linuxnative package

cpuid module

legacy\_pci module

linuxnativehelper module

Native Linux helper

windows package

windowshelper module

basehelper module

nonehelper module

oshelper module

Abstracts support for various OS/environments, wrapper around platform specific code that invokes kernel driver

## Methods for Platform Detection

### Uses PCI VID and DID to detect processor and PCH

Processor: 0:0.0

PCH: Scans enumerated PCI Devices for corresponding VID/DID per configurations.

### Chip information located in `chipsec/chipset.py`.

Currently requires VID of 0x8086 (Intel) or 0x1022 (AMD).

DID is used as the lookup key.

If there are matching DID, will fall back to cpuid check for CPU.

## Platform Configuration Options

Select a specific platform using the `-p` flag.

Specify PCH using the `--pch` flag.

~Ignore the platform specific registers using the `-i` flag.~ The `-i` flag has been deprecated and should not be used.

## Sample module code template

```
from chipsec.module_common import BaseModule, ModuleResult

class ModuleClass(BaseModule):
    """Class name aligns with file name, eg ModuleClass.py"""
    def __init__(self):
        BaseModule.__init__(self)

    def is_supported(self):
        """Module prerequisite checks"""
        if some_module_requirement():
            return True # Module is applicable
        self.res = ModuleResult.NOTAPPLICABLE
        return False # Module is not applicable

    def action(self):
        """Module test logic and methods as needed"""
        self.logger.log_passed('Module was successful!')
        return ModuleResult.PASSED

    def run(self, module_argv):
        """Primary module execution and result handling"""
        self.logger.start_test('Module Description')
        self.res = self.action()
        return self.res
```

Util Command

```
# chipsec_util.py commands live in chipsec/utlcmd/
# Example file name: <command_display_name>_cmd.py

from argparse import ArgumentParser

from chipsec.command import BaseCommand, toLoad

class CommandClass(BaseCommand):
    """
    >>> chipsec_util command_display_name action
    """
    def requirements(self) -> toLoad:
        return toLoad.All

    def parse_arguments(self):
        parser = ArgumentParser(prog='chipsec_util command_display_name', usage=CommandClass.__doc__)
        subparsers = parser.add_subparsers()
        parser_entrypoint = subparsers.add_parser('action')
        parser_entrypoint.set_defaults(func=self.action)
        parser.parse_args(self.argv, namespace=self)

    def action(self):
        return

    def run(self):
        self.func()

commands = {'command_display_name': CommandClass}
```

## CHIPSEC Modules

A CHIPSEC module is just a python class that inherits from BaseModule and implements is\_supported and run. Modules are stored under the chipsec installation directory in a subdirectory “modules”. The “modules” directory contains one subdirectory for each chipset that chipsec supports. There is also a directory for common modules that should apply to every platform.

chipsec/modules/	modules including tests or tools (that’s where most of the chipsec functionality is)
chipsec/modules/common/	modules common to all platforms
chipsec/modules/<platform>/	modules specific to <platform>
chipsec/modules/tools/	security tools based on CHIPSEC framework (fuzzers, etc.)

Internally the chipsec application uses the concept of a module name, which is a string of the form: common.bios\_wp. This means module common.bios\_wp is a python script called bios\_wp.py that is stored at <ROOT\_DIR>\chipsec\modules\common\.

Modules can be mapped to one or more security vulnerabilities being checked. More information also found in the documentation for any individual module.

Known vulnerabilities can be mapped to CHIPSEC modules as follows:

## Attack Surface/Vector: Firmware protections in ROM

Vulnerability Description	CHIPSEC Module	Example
SMI event configuration is not locked	common.bios_smi	
SPI flash descriptor is not protected	common.spi_desc	
SPI controller security override is enabled	common.spi_fdopss	
SPI flash controller is not locked	common.spi_lock	
Device-specific SPI flash protection is not used	chipsec_util spi write (manual analysis)	
SMM BIOS write protection is not correctly used	common.bios_wp	
Flash protected ranges do not protect bios region	common.bios_wp	
BIOS interface is not locked	common.bios_ts	

### Attack Surface/Vector: Runtime protection of SMRAM

Vulnerability Description	CHIPSEC Module	Example
Compatibility SMRAM is not locked	common.smm	
SMM cache attack	common.smrr	
Memory remapping vulnerability in SMM protection	remap	
DMA protections of SMRAM are not in use	smm_dma	
Graphics aperture redirection of SMRAM	chipsec_util memconfig remap	
Memory sinkhole vulnerability	tools.cpu.sinkhole	

### Attack Surface/Vector: Secure boot - Incorrect protection of secure boot configuration

Vulnerability Description	CHIPSEC Module	Example
Root certificate	common.bios_wp, common.secureboot.variables	
Key exchange keys	common.secureboot.variables	
Controls in setup variable (CSM enable/disable, image verification policies, secure boot enable/disable, clear/restore keys)	chipsec_util uefi var-find Setup	

TE header confusion	tools.secureboot.te	
UEFI NVRAM is not write protected	common.bios_wp	
Insecure handling of secure boot disable	chipsec_util uefi var-list	

### Attack Surface/Vector: Persistent firmware configuration

Vulnerability Description	CHIPSEC Module	Example
Secure boot configuration is stored in unprotected variable	common.secureboot.variables, chipsec_util uefi var-list	
Variable permissions are not set according to specification	common.uefi.access_uefispec	
Sensitive data (like passwords) are stored in uefi variables	chipsec_util uefi var-list (manual analysis)	
Firmware doesn't sanitize pointers/addresses stored in variables	chipsec_util uefi var-list (manual analysis)	
Firmware hangs on invalid variable content	chipsec_util uefi var-write, chipsec_util uefi var-delete (manual analysis)	
Hardware configuration stored in unprotected variables	chipsec_util uefi var-list (manual analysis)	
Re-creating variables with less restrictive permissions	chipsec_util uefi var-write (manual analysis)	
Variable NVRAM overflow	chipsec_util uefi var-write (manual analysis)	
Critical configuration is stored in unprotected CMOS	chipsec_util cmos, common.rtclock	

### Attack Surface/Vector: Platform hardware configuration

Vulnerability Description	CHIPSEC Module	Example
Boot block top-swap mode is not locked	common.bios_ts	
Architectural features not locked	common.ia32cfg	
Memory map is not locked	memconfig	
IOMMU usage	chipsec_util iommu	
Memory remapping is not locked	remap	



### Attack Surface/Vector: Runtime firmware (eg. SMI handlers)

Vulnerability Description	CHIPSEC Module	Example
SMI handlers use pointers/addresses from OS without validation	tools.smm.smm_ptr	
Legacy SMI handlers call legacy BIOS outside SMRAM		
INT15 in legacy SMI handlers		
UEFI SMI handlers call UEFI services outside SMRAM		
Malicious CommBuffer pointer and contents		
Race condition during SMI handler		
Authenticated variables SMI handler is not implemented	chipsec_util uefi var-write	
SmmRuntime vulnerability	tools.uefi.scan_blocked	

### Attack Surface/Vector: Boot time firmware

Vulnerability Description	CHIPSEC Module	Example
Software vulnerabilities when parsing, decompressing, and loading data from ROM		
Software vulnerabilities in implementation of digital signature verification		
Pointers stored in UEFI variables and used during boot	chipsec_util uefi var-write	
Loading unsigned PCI option ROMs	chipsec_util pci xrom	
Boot hangs due to error condition (eg. ASSERT)		

### Attack Surface/Vector: Power state transitions (eg. resume from sleep)

Vulnerability Description	CHIPSEC Module	Example
Insufficient protection of S3 boot script table	common.uefi.s3bootscript, tools.uefi.s3script_modify	
Dispatch opcodes in S3 boot script call functions in unprotected memory	common.uefi.s3bootscript, tools.uefi.s3script_modify	

S3 boot script interpreter stored in unprotected memory		
Pointer to S3 boot script table in unprotected UEFI variable	common.uefi.s3bootscript, tools.uefi.s3script_modify	
Critical setting not recorded in S3 boot script table	chipsec_util uefi s3bootscript (manual analysis)	
OS waking vector in ACPI tables can be modified	chipsec_util acpi dump (manual analysis)	
Using pointers on S3 resume stored in unprotected UEFI variables	chipsec_util uefi var-write	

### Attack Surface/Vector: Firmware update

Vulnerability Description	CHIPSEC Module	Example
Software vulnerabilities when parsing firmware updates		
Unauthenticated firmware updates		
Runtime firmware update that can be interrupted		
Signature not checked on capsule update executable		

### Attack Surface/Vector: Network interfaces

Vulnerability Description	CHIPSEC Module	Example
Software vulnerabilities when handling messages over network interfaces		
Booting unauthenticated firmware over unprotected network interfaces		

### Attack Surface/Vector: Misc

Vulnerability Description	CHIPSEC Module	Example
BIOS keyboard buffer is not cleared during boot	common.bios_kbrd_buffer	
DMA attack from devices during firmware execution		

## Modules

modules package

bdw package

byt package

common package

cpu package

cpu\_info module

Displays CPU information

**Reference:**

- **Intel 64 and IA-32 Architectures Software Developer Manual (SDM)**
  - <https://www.intel.com/content/www/us/en/developer/articles/technical/intel-sdm.html>

**Usage:**

```
chipsec_main -m common.cpu.cpu_info
```

**Examples:**

```
>>> chipsec_main.py -m common.cpu.cpu_info
```

**Registers used:**

- IA32\_BIOS\_SIGN\_ID.Microcode

ia\_untrusted module

IA Untrusted checks

**Usage:**

```
chipsec_main -m common.cpu.ia_untrusted
```

**Examples:**

```
>>> chipsec_main.py -m common.cpu.ia_untrusted
```

**Registers used:**

- MSR\_BIOS\_DONE.IA\_UNTRUSTED
- MSR\_BIOS\_DONE.SoC\_BIOS\_DONE

#### spectre\_v2 module

The module checks if system includes hardware mitigations for Speculative Execution Side Channel. Specifically, it verifies that the system supports CPU mitigations for Branch Target Injection vulnerability a.k.a. Spectre Variant 2 (CVE-2017-5715)

The module checks if the following hardware mitigations are supported by the CPU and enabled by the OS/software:

1. Indirect Branch Restricted Speculation (IBRS) and Indirect Branch Predictor Barrier (IBPB):  
CPUID.(EAX=7H,ECX=0):EDX[26] == 1
2. Single Thread Indirect Branch Predictors (STIBP): CPUID.(EAX=7H,ECX=0):EDX[27] == 1  
IA32\_SPEC\_CTRL[STIBP] == 1
3. Enhanced IBRS: CPUID.(EAX=7H,ECX=0):EDX[29] == 1 IA32\_ARCH\_CAPABILITIES[IBRS\_ALL] == 1  
IA32\_SPEC\_CTRL[IBRS] == 1
4. @TODO: Mitigation for Rogue Data Cache Load (RDCL): CPUID.(EAX=7H,ECX=0):EDX[29] == 1  
IA32\_ARCH\_CAPABILITIES[RDCL\_NO] == 1

In addition to checking if CPU supports and OS enables all mitigations, we need to check that relevant MSR bits are set consistently on all logical processors (CPU threads).

The module returns the following results:

#### **FAILED:**

IBRS/IBPB is not supported

#### **WARNING:**

IBRS/IBPB is supported

Enhanced IBRS is not supported

#### **WARNING:**

IBRS/IBPB is supported

Enhanced IBRS is supported

Enhanced IBRS is not enabled by the OS

#### **WARNING:**

IBRS/IBPB is supported

STIBP is not supported or not enabled by the OS

#### **PASSED:**

IBRS/IBPB is supported

Enhanced IBRS is supported

Enhanced IBRS is enabled by the OS

STIBP is supported

Notes:

- The module returns WARNING when CPU doesn't support enhanced IBRS Even though OS/software may use basic IBRS by setting IA32\_SPEC\_CTRL[IBRS] when necessary, we have no way to verify this

- The module returns WARNING when CPU supports enhanced IBRS but OS doesn't set IA32\_SPEC\_CTRL[IBRS] Under enhanced IBRS, OS can set IA32\_SPEC\_CTRL[IBRS] once to take advantage of IBRS protection
- The module returns WARNING when CPU doesn't support STIBP or OS doesn't enable it Per Speculative Execution Side Channel Mitigations: "enabling IBRS prevents software operating on one logical processor from controlling the predicted targets of indirect branches executed on another logical processor. For that reason, it is not necessary to enable STIBP when IBRS is enabled"
- OS/software may implement "retpoline" mitigation for Spectre variant 2 instead of using CPU hardware IBRS/IBPB

@TODO: we should verify CPUID.07H:EDX on all logical CPUs as well because it may differ if ucode update wasn't loaded on all CPU cores

Hardware registers used:

- CPUID.(EAX=7H,ECX=0):EDX[26] - enumerates support for IBRS and IBPB
- CPUID.(EAX=7H,ECX=0):EDX[27] - enumerates support for STIBP
- CPUID.(EAX=7H,ECX=0):EDX[29] - enumerates support for the IA32\_ARCH\_CAPABILITIES MSR
- IA32\_ARCH\_CAPABILITIES[IBRS\_ALL] - enumerates support for enhanced IBRS
- IA32\_ARCH\_CAPABILITIES[RCDL\_NO] - enumerates support RCDL mitigation
- IA32\_SPEC\_CTRL[IBRS] - enable control for enhanced IBRS by the software/OS
- IA32\_SPEC\_CTRL[STIBP] - enable control for STIBP by the software/OS

References:

- Reading privileged memory with a side-channel by Jann Horn, Google Project Zero:  
<https://googleprojectzero.blogspot.com/2018/01/reading-privileged-memory-with-side.html>
- Spectre: <https://spectreattack.com/spectre.pdf>
- Meltdown: <https://meltdownattack.com/meltdown.pdf>
- Speculative Execution Side Channel Mitigations:  
<https://software.intel.com/sites/default/files/managed/c5/63/336996-Speculative-Execution-Side-Channel-Mitigations.pdf>
- Retpoline: a software construct for preventing branch-target-injection:  
<https://support.google.com/faqs/answer/7625886>

secureboot package

variables module

Verify that all Secure Boot key UEFI variables are authenticated (BS+RT+AT) and protected from unauthorized modification.

**Reference:**

- [UEFI 2.4 spec Section 28](#)

**Usage:**

```
chipsec_main -m common.secureboot.variables [-a modify] -a : modify = will try to write/corrupt the variables
```

**Where:**

- [ ]: optional line

**Examples:**

```
>>> chipsec_main.py -m common.secureboot.variables
>>> chipsec_main.py -m common.secureboot.variables -a modify
```

**Note**

- Module is not supported in all environments.

## uefi package

## access\_ufispec module

Checks protection of UEFI variables defined in the UEFI spec to have certain permissions.

Returns failure if variable attributes are not as defined in [table 11 “Global Variables”](#) of the UEFI spec.

**usage:**

```
chipsec_main -m common.uefi.access_ufispec [-a modify]
```

- -a modify: Attempt to modify each variable in addition to checking attributes

**Where:**

- [ ]: optional line

**Examples:**

```
>>> chipsec_main.py -m common.uefi.access_ufispec
>>> chipsec_main.py -m common.uefi.access_ufispec -a modify
```

NOTE: Requires an OS with UEFI Runtime API support.

## s3bootscript module

Checks protections of the S3 resume boot-script implemented by the UEFI based firmware

**References:**

[VU#976132 UEFI implementations do not properly secure the EFI S3 Resume Boot Path boot script](#)

[Technical Details of the S3 Resume Boot Script Vulnerability](#) by Intel Security's Advanced Threat Research team.

[Attacks on UEFI Security](#) by Rafal Wojtczuk and Corey Kallenberg.

[Attacking UEFI Boot Script](#) by Rafal Wojtczuk and Corey Kallenberg.

[Exploiting UEFI boot script table vulnerability](#) by Dmytro Oleksiuk.

**Usage:**

```
chipsec_main.py -m common.uefi.s3bootscript [-a <script_address>]
```

- -a <script\_address>: Specify the bootscript address

**Where:**

- [ ]: optional line

**Examples:**

```
>>> chipsec_main.py -m common.uefi.s3bootscript
>>> chipsec_main.py -m common.uefi.s3bootscript -a 0x00000000BDE10000
```

## Note

Requires an OS with UEFI Runtime API support.

### bios\_kbrd\_buffer module

Checks for exposure of pre-boot passwords (BIOS/HDD/pre-bot authentication SW) in the BIOS keyboard buffer.

**Reference:**

- DEFCON 16: [Bypassing Pre-boot Authentication Passwords by Instrumenting the BIOS Keyboard Buffer](#) by Jonathan Brossard

**Usage:**

```
chipsec_main -m common.bios_kbrd_buffer
```

**Examples:**

```
>>> chipsec_main.py -m common.bios_kbrd_buffer
```

### bios\_smi module

The module checks that SMI events configuration is locked down - Global SMI Enable/SMI Lock - TCO SMI Enable/TCO Lock

**References:**

- [Setup for Failure: Defeating SecureBoot](#) by Corey Kallenberg, Xeno Kovah, John Butterworth, Sam Cornwell
- [Summary of Attacks Against BIOS and Secure Boot](#)

**Usage:**

```
chipsec_main -m common.bios_smi
```

**Examples:**

```
>>> chipsec_main.py -m common.bios_smi
```

**Registers used:**

- SmmBiosWriteProtection (Control)
- TCOSMILock (Control)
- SMILock (Control)
- BiosWriteEnable (Control)

**bios\_ts module**

Checks for BIOS Interface Lock including Top Swap Mode

**References:**

- [BIOS Boot Hijacking and VMware Vulnerabilities Digging](#) by Bing Sun

**Usage:**

```
chipsec_main -m common.bios_ts
```

**Examples:**

```
>>> chipsec_main.py -m common.bios_ts
```

**Registers used:**

- BiosInterfaceLockDown (control)
- TopSwapStatus (control)
- TopSwap (control)

**bios\_wp module**

The BIOS region in flash can be protected either using SMM-based protection or using configuration in the SPI controller. However, the SPI controller configuration is set once and locked, which would prevent writes later.

This module checks both mechanisms. In order to pass this test using SPI controller configuration, the SPI Protected Range registers (PR0-4) will need to cover the entire BIOS region. Often, if this configuration is used at all, it is used only to protect part of the BIOS region (usually the boot block). If other important data (eg. NVRAM) is not protected, however, some vulnerabilities may be possible.

[A Tale of One Software Bypass of Windows 8 Secure Boot](#) In a system where certain BIOS data was not protected, malware may be able to write to the Platform Key stored on the flash, thereby disabling secure boot.

SMM based write protection is controlled from the BIOS Control Register. When the BIOS Write Protect Disable bit is set (sometimes called BIOSWE or BIOS Write Enable), then writes are allowed. When cleared, it can also be locked with the BIOS Lock Enable (BLE) bit. When locked, attempts to change the WPD bit will result in generation of an SMI. This way, the SMI handler can decide whether to perform the write.

As demonstrated in the [Speed Racer](#) issue, a race condition may exist between the outstanding write and processing of the SMI that is generated. For this reason, the EISS bit (sometimes called SMM\_BWP or SMM BIOS Write Protection) must be set to ensure that only SMM can write to the SPI flash.

**References:**

- [A Tale of One Software Bypass of Windows 8 Secure Boot](#)
- [Speed Racer](#)

**Usage:**

```
chipsec_main -m common.bios_wp
```

**Examples:**

```
>>> chipsec_main.py -m common.bios_wp
```

**Registers used: (n = 0,1,2,3,4)**

- BiosLockEnable (Control)
- BiosWriteEnable (Control)



- SmmBiosWriteProtection (Control)
- PRn.PRb
- PRn.RPE
- PRn.PRL
- PRn.WPE

## Note

- Module will fail if SMM-based protection is not correctly configured and SPI protected ranges (PR registers) do not protect the entire BIOS region.

### cet module

Reports CET Settings

#### Usage:

```
chipsec_main -m common.cet
```

#### Example:

```
>>> chipsec_main.py -m common.cet
```

## Note

- cpuid(7, 0) must return 1 at bit 7 to run
- IA32\_U\_CET and IA32\_S\_CET must be defined for addition information.
- Module is INFORMATION only and does NOT return a Pass/Fail

### debugenabled module

This module checks if the system has debug features turned on, specifically the Direct Connect Interface (DCI).

This module checks the following bits: 1. HDCIEN bit in the DCI Control Register 2. Debug enable bit in the IA32\_DEBUG\_INTERFACE MSR 3. Debug lock bit in the IA32\_DEBUG\_INTERFACE MSR 4. Debug occurred bit in the IA32\_DEBUG\_INTERFACE MSR

#### Usage:

```
chipsec_main -m common.debugenabled
```

#### Examples:

```
>>> chipsec_main.py -m common.debugenabled
```

The module returns the following results:

- **FAILED** : Any one of the debug features is enabled or unlocked.
- **PASSED** : All debug feature are disabled and locked.

**Registers used:**

- IA32\_DEBUG\_INTERFACE[DEBUGENABLE]
- IA32\_DEBUG\_INTERFACE[DEBUGELOCK]
- IA32\_DEBUG\_INTERFACE[DEBUGEOCCURED]
- P2SB\_DCI.DCI\_CONTROL\_REG[HDCIEN]

**ia32cfg module**

Tests that IA-32/IA-64 architectural features are configured and locked, including IA32 Model Specific Registers (MSRs)

**Reference:**

- **Intel 64 and IA-32 Architectures Software Developer Manual (SDM)**
- <https://www.intel.com/content/www/us/en/developer/articles/technical/intel-sdm.html>

**Usage:**

```
chipsec_main -m common.ia32cfg
```

**Examples:**

```
>>> chipsec_main.py -m common.ia32cfg
```

**Registers used:**

- IA32\_FEATURE\_CONTROL
- Ia32FeatureControlLock (control)

**me\_mfg\_mode module**

This module checks that ME Manufacturing mode is not enabled.

**References:**

<https://blog.ptsecurity.com/2018/10/intel-me-manufacturing-mode-macbook.html>

**PCI\_DEVS.H**

```
#define PCH_DEV_SLOT_CSE          0x16
#define PCH_DEVFN_CSE             _PCH_DEVFN(CSE, 0)
#define PCH_DEV_CSE               _PCH_DEV(CSE, 0)
```

<https://github.com/coreboot/coreboot/blob/master/src/soc/intel/apollolake/cse.c>

```
fwsts1 = dump_status(1, PCI_ME_HFSTS1);
# Minimal decoding is done here in order to call out most important
# pieces. Manufacturing mode needs to be locked down prior to shipping
# the product so it's called out explicitly.
printf(BIOS_DEBUG, "ME: Manufacturing Mode      : %s", (fwsts1 & (1 << 0x4)) ? "YES" : "NO");
```

**PCH.H**

```
#define PCH_ME_DEV                PCI_DEV(0, 0x16, 0)
```

**ME.H**

```
struct me_hfs {
    u32 working_state: 4;
    u32 mfg_mode: 1;
```

```

    u32 fpt_bad: 1;
    u32 operation_state: 3;
    u32 fw_init_complete: 1;
    u32 ft_bup_ld_flr: 1;
    u32 update_in_progress: 1;
    u32 error_code: 4;
    u32 operation_mode: 4;
    u32 reserved: 4;
    u32 boot_options_present: 1;
    u32 ack_data: 3;
    u32 bios_msg_ack: 4;
} __packed;

```

## ME\_STATUS.C

```

printfk(BIOS_DEBUG, "ME: Manufacturing Mode      : %s", hfs->mfg_mode ? "YES" : "NO");

```

This module checks the following:

HFS.MFG\_MODE BDF: 0:22:0 offset 0x40 - Bit [4]

### Usage:

```

chipsec_main -m common.me_mfg_mode

```

### Examples:

```

>>> chipsec_main.py -m common.me_mfg_mode

```

The module returns the following results:

FAILED : HFS.MFG\_MODE is set

PASSED : HFS.MFG\_MODE is not set.

### Hardware registers used:

- HFS.MFG\_MODE

## memconfig module

This module verifies memory map secure configuration, that memory map registers are correctly configured and locked down.

### Usage:

```

chipsec_main -m common.memconfig

```

### Example:

```

>>> chipsec_main.py -m common.memconfig

```

## Note

- This module will only run on Core (client) platforms.

## memlock module

This module checks if memory configuration is locked to protect SMM

### Reference:

- [https://github.com/coreboot/coreboot/blob/master/src/cpu/intel/model\\_206ax/finalize.c](https://github.com/coreboot/coreboot/blob/master/src/cpu/intel/model_206ax/finalize.c)
- <https://github.com/coreboot/coreboot/blob/master/src/soc/intel/broadwell/include/soc/msr.h>

This module checks the following: - MSR\_LT\_LOCK\_MEMORY MSR (0x2E7) - Bit [0]

**The module returns the following results:**

- **FAILED** : MSR\_LT\_LOCK\_MEMORY[0] is not set
- **PASSED** : MSR\_LT\_LOCK\_MEMORY[0] is set
- **ERROR** : Problem reading MSR\_LT\_LOCK\_MEMORY values

**Usage:**

```
chipsec_main -m common.memlock
```

**Example:**

```
>>> chipsec_main.py -m common.memlock
```

**Registers used:**

- MSR\_LT\_LOCK\_MEMORY

## Note

- This module will not run on Atom based platforms.

## remap module

Check Memory Remapping Configuration

**Reference:**

- [Preventing & Detecting Xen Hypervisor Subversions](#) by Joanna Rutkowska & Rafal Wojtczuk

**Usage:**

```
chipsec_main -m common.remap
```

**Example:**

```
>>> chipsec_main.py -m common.remap
```

**Registers used:**

- PCI0.0.0\_REMAPBASE
- PCI0.0.0\_REMAPLIMIT
- PCI0.0.0\_TOUUD
- PCI0.0.0\_TOLUD
- PCI0.0.0\_TSEGMB

## Note

- This module will only run on Core platforms.

## rtclock module

## sgx\_check module

Check SGX related configuration

**Reference:**

- SGX BWG, CDI/IBP#: 565432

**Usage:**

```
chipsec_main -m common.sgx_check
```

**Examples:**

```
>>> chipsec_main.py -m common.sgx_check
```

**Registers used:**

- IA32\_FEATURE\_CONTROL.SGX\_GLOBAL\_EN
- IA32\_FEATURE\_CONTROL.LOCK
- IA32\_DEBUG\_INTERFACE.ENABLE
- IA32\_DEBUG\_INTERFACE.LOCK
- MTRRCAP.PRMRR
- PRMRR\_VALID\_CONFIG
- PRMRR\_PHYBASE.PRMRR\_base\_address\_fields
- PRMRR\_PHYBASE.PRMRR\_MEMTYPE
- PRMRR\_MASK.PRMRR\_mask\_bits
- PRMRR\_MASK.PRMRR\_VLD
- PRMRR\_MASK.PRMRR\_LOCK
- PRMRR\_UNCORE\_PHYBASE.PRMRR\_base\_address\_fields
- PRMRR\_UNCORE\_MASK.PRMRR\_mask\_bits
- PRMRR\_UNCORE\_MASK.PRMRR\_VLD
- PRMRR\_UNCORE\_MASK.PRMRR\_LOCK
- BIOS\_SE\_SVN.PFAT\_SE\_SVN
- BIOS\_SE\_SVN.ANC\_SE\_SVN
- BIOS\_SE\_SVN.SCLEAN\_SE\_SVN
- BIOS\_SE\_SVN.SINIT\_SE\_SVN
- BIOS\_SE\_SVN\_STATUS.LOCK
- SGX\_DEBUG\_MODE.SGX\_DEBUG\_MODE\_STATUS\_BIT

**Note**

- Will not run within the EFI Shell

## smm module

Compatible SMM memory (SMRAM) Protection check module This CHIPSEC module simply reads SMRAMC and checks that D\_LCK is set.

Reference: In 2006, [Security Issues Related to Pentium System Management Mode](#) outlined a configuration issue where compatibility SMRAM was not locked on some platforms. This means that ring 0 software was able to modify System Management Mode (SMM) code and data that should have been protected.

In Compatibility SMRAM (CSEG), access to memory is defined by the SMRAMC register. When SMRAMC[D\_LCK] is not set by the BIOS, SMRAM can be accessed even when the CPU is not in SMM. Such attacks were also described in [Using CPU SMM to Circumvent OS Security Functions](#) and [Using SMM for Other Purposes](#).

**usage:**

```
chipsec_main -m common.smm
```

**Examples:**

```
>>> chipsec_main.py -m common.smm
```

This module will only run on client (core) platforms that have PCI0.0.0\_SMRAMC defined.

## smm\_code\_chk module

SMM\_Code\_Chk\_En (SMM Call-Out) Protection check

SMM\_Code\_Chk\_En is a bit found in the MSR\_SMM\_FEATURE\_CONTROL register. Once set to '1', any CPU that attempts to execute SMM code not within the ranges defined by the SMRR will assert an unrecoverable MCE. As such, enabling and locking this bit is an important step in mitigating SMM call-out vulnerabilities. This CHIPSEC module simply reads the register and checks that SMM\_Code\_Chk\_En is set and locked.

**Reference:**

- **Intel 64 and IA-32 Architectures Software Developer Manual (SDM)**
- <https://www.intel.com/content/www/us/en/developer/articles/technical/intel-sdm.html>

**Usage:**

```
chipsec_main -m common.smm_code_chk
```

**Examples:**

```
>>> chipsec_main.py -m common.smm_code_chk
```

**Registers used:**

- MSR\_SMM\_FEATURE\_CONTROL.LOCK
- MSR\_SMM\_FEATURE\_CONTROL.SMM\_Code\_Chk\_En

**Note**

- MSR\_SMM\_FEATURE\_CONTROL may not be defined or readable on all platforms.

## smm\_dma module

SMM TSEG Range Configuration Checks

This module examines the configuration and locking of SMRAM range configuration protecting from DMA attacks. If it fails, then DMA protection may not be securely configured to protect SMRAM.

Just like SMRAM needs to be protected from software executing on the CPU, it also needs to be protected from devices that have direct access to DRAM (DMA). Protection from DMA is configured through proper programming of SMRAM memory range. If BIOS does not correctly configure and lock the configuration, then malware could reprogram configuration and open SMRAM area to DMA access, allowing manipulation of memory that should have been protected.

#### References:

- [System Management Mode Design and Security Issues](#)
- [Summary of Attack against BIOS and Secure Boot](#)

#### Usage:

```
chipsec_main -m smm_dma
```

#### Examples:

```
>>> chipsec_main.py -m smm_dma
```

#### Registers used:

- TSEGBaseLock (control)
- TSEGLimitLock (control)
- MSR\_BIOS\_DONE.IA\_UNTRUSTED
- PCI0.0.0\_TSEGMB.TSEGMB
- PCI0.0.0\_BGSM.BGSM
- IA32\_SMRR\_PHYSBASE.PhysBase
- IA32\_SMRR\_PHYSMASK.PhysMask

#### Supported Platforms:

- Core (client)

#### smrr module

CPU SMM Cache Poisoning / System Management Range Registers check

This module checks to see that SMRRs are enabled and configured.

#### Reference:

Researchers demonstrated a way to use CPU cache to effectively change values in SMRAM in [Attacking SMM Memory via Intel CPU Cache Poisoning](#) and [Getting into the SMRAM: SMM Reloaded](#) . If ring 0 software can make SMRAM cacheable and then populate cache lines at SMBASE with exploit code, then when an SMI is triggered, the CPU could execute the exploit code from cache. System Management Mode Range Registers (SMRRs) force non-cachable behavior and block access to SMRAM when the CPU is not in SMM. These registers need to be enabled/configured by the BIOS.

#### Usage:

```
chipsec_main -m common.smrr [-a modify]
```

- -a modify: Attempt to modify memory at SMRR base

#### Examples:

```
>>> chipsec_main.py -m common.smrr
>>> chipsec_main.py -m common.smrr -a modify
```

**Registers used:**

- IA32\_SMRR\_PHYSBASE.PhysBase
- IA32\_SMRR\_PHYSBASE.Type
- IA32\_SMRR\_PHYSMASK.PhysMask
- IA32\_SMRR\_PHYSMASK.Valid

**spd\_wd module**

This module checks that SPD Write Disable bit in SMBus controller has been set

**References:**

Intel 8 Series/C220 Series Chipset Family Platform Controller Hub datasheet Intel 300 Series Chipset Families Platform Controller Hub datasheet

This module checks the following:

SMBUS\_HCFG.SPD\_WD

The module returns the following results:

PASSED : SMBUS\_HCFG.SPD\_WD is set

FAILED : SMBUS\_HCFG.SPD\_WD is not set and SPDs were detected

INFORMATION: SMBUS\_HCFG.SPD\_WD is not set, but no SPDs were detected

Hardware registers used:

SMBUS\_HCFG

**Usage:**

```
chipsec_main -m common.spd_wd
```

**Examples:**

```
>>> chipsec_main.py -m common.spd_wd
```

**Note**

**This module will only run if:**

- SMBUS device is enabled
- SMBUS\_HCFG.SPD\_WD is defined for the platform

**spi\_access module**

SPI Flash Region Access Control

Checks SPI Flash Region Access Permissions programmed in the Flash Descriptor

**Usage:**

```
chipsec_main -m common.spi_access
```

**Examples:**

```
>>> chipsec_main.py -m common.spi_access
```



**Registers used:**

- HSFS.FDV
- FRAP.BRWA

**Important**

- Some platforms may use alternate means of protecting these regions. Consider this when assessing results.

**spi\_desc module**

The SPI Flash Descriptor indicates read/write permissions for devices to access regions of the flash memory. This module simply reads the Flash Descriptor and checks that software cannot modify the Flash Descriptor itself. If software can write to the Flash Descriptor, then software could bypass any protection defined by it. While often used for debugging, this should not be the case on production systems.

This module checks that software cannot write to the flash descriptor.

**Usage:**

```
chipsec_main -m common.spi_desc
```

**Examples:**

```
>>> chipsec_main.py -m common.spi_desc
```

**Registers used:**

- FRAP.BRRA
- FRAP.BRWA

**spi\_fdopss module**

Checks for SPI Controller Flash Descriptor Security Override Pin Strap (FDOPSS). On some systems, this may be routed to a jumper on the motherboard.

**Usage:**

```
chipsec_main -m common.spi_fdopss
```

**Examples:**

```
>>> chipsec_main.py -m common.spi_fdopss
```

**Registers used:**

- HSFS.FDOPSS

**spi\_lock module**

The configuration of the SPI controller, including protected ranges (PR0-PR4), is locked by HSFS[FLOCKDN] until reset. If not locked, the controller configuration may be bypassed by reprogramming these registers.

This vulnerability (not setting FLOCKDN) is also checked by other tools, including [flashrom](#) and Copernicus by MITRE.

This module checks that the SPI Flash Controller configuration is locked.

### Reference:

- [flashrom](#)
- [Copernicus: Question Your Assumptions about BIOS Security](#)

### Usage:

```
chipsec_main -m common.spi_lock
```

### Examples:

```
>>> chipsec_main.py -m common.spi_lock
```

### Registers used:

- FlashLockDown (control)
- SpiWriteStatusDis (control)

hsw package

ivb package

snb package

tools package

cpu package

sinkhole module

This module checks if CPU is affected by 'The SMM memory sinkhole' vulnerability

### References:

- [Memory Sinkhole presentation by Christopher Domas](#)
- [Memory Sinkhole whitepaper](#)

### Usage:

```
chipsec_main -m tools.cpu.sinkhole
```

### Examples:

```
>>> chipsec_main.py -m tools.cpu.sinkhole
```

### Registers used:

- IA32\_APIC\_BASE.APICBase
- IA32\_SMRR\_PHYSBASE.PhysBase
- IA32\_SMRR\_PHYSMASK

## Note

- Supported OS: Windows or Linux

## Warning

- The system may hang when running this test.
- In that case, the mitigation to this issue is likely working but we may not be handling the exception generated.

secureboot package

te module

Tool to test for 'TE Header' vulnerability in Secure Boot implementations as described in [All Your Boot Are Belong To Us](#)

### Usage:

```
chipsec_main.py -m tools.secureboot.te [-a <mode>,<cfg_file>,<efi_file>]
```

- <mode>
  - `generate_te` (default) convert PE EFI binary <efi\_file> to TE binary
  - `replace_bootloader` replace bootloader files listed in <cfg\_file> on ESP with modified <efi\_file>
  - `restore_bootloader` restore original bootloader files from .bak files
- <cfg\_file> path to config file listing paths to bootloader files to replace
- <efi\_file> path to EFI binary to convert to TE binary. If no file path is provided, the tool will look for Shell.efi

Examples:

Convert Shell.efi PE/COFF EFI executable to TE executable:

```
chipsec_main.py -m tools.secureboot.te -a generate_te,Shell.efi
```

Replace bootloaders listed in te.cfg file with TE version of Shell.efi executable:

```
chipsec_main.py -m tools.secureboot.te -a replace_bootloader,te.cfg,Shell.efi
```

Restore bootloaders listed in te.cfg file:

```
chipsec_main.py -m tools.secureboot.te -a restore_bootloader,te.cfg
```

## smm package

## rogue\_mmio\_bar module

Experimental module that may help checking SMM firmware for MMIO BAR hijacking vulnerabilities described in the following presentation:

[BARing the System: New vulnerabilities in Coreboot & UEFI based systems](#) by Intel Advanced Threat Research team at RECon Brussels 2017

**Usage:**

```
chipsec_main -m tools.smm.rogue_mmio_bar [-a <smi_start:smi_end>,<b:d.f>]
```

- smi\_start:smi\_end: range of SMI codes (written to IO port 0xB2)
- b:d.f: PCIe bus/device/function in b:d.f format (in hex)

**Example:**

```
>>> chipsec_main.py -m tools.smm.rogue_mmio_bar -a 0x00:0x80
>>> chipsec_main.py -m tools.smm.rogue_mmio_bar -a 0x00:0xFF,0:1C.0
```

**Note**

Look for 'changes found' messages for items that should be further investigated.

**Warning**

When running this test, system may freeze, reboot, etc. This is not unexpected behavior and not generally considered a failure.

## smm\_ptr module

A tool to test SMI handlers for pointer validation vulnerabilities

**Reference:**

- **Presented in CanSecWest 2015:**

- c7zero.info: [A New Class of Vulnerability in SMI Handlers of BIOS/UEFI Firmware](#)

**Usage:** chipsec\_main -m tools.smm.smm\_ptr -l log.txt \

```
[-a <mode>,<config_file>|<smic_start:smic_end>,<size>,<address>]
```

- mode: SMI fuzzing mode
  - config = use SMI configuration file <config\_file>
  - fuzz = fuzz all SMI handlers with code in the range <smic\_start:smic\_end>
  - fuzzmore = fuzz mode + pass 2nd-order pointers within buffer to SMI handlers
- size: size of the memory buffer (in Hex)
- address: physical address of memory buffer to pass in GP regs to SMI handlers (in Hex)

- smram = option passes address of SMRAM base (system may hang in this mode!)

In config mode, SMI configuration file should have the following format

```
SMI_code=<SMI code> or *
SMI_data=<SMI data> or *
RAX=<value of RAX> or * or PTR or VAL
RBX=<value of RBX> or * or PTR or VAL
RCX=<value of RCX> or * or PTR or VAL
RDX=<value of RDX> or * or PTR or VAL
RSI=<value of RSI> or * or PTR or VAL
RDI=<value of RDI> or * or PTR or VAL
[PTR_OFFSET=<offset to pointer in the buffer>]
[SIG=<signature>]
[SIG_OFFSET=<offset to signature in the buffer>]
[Name=<SMI name>]
[Desc=<SMI description>]
```

Where:

- [ ]: optional line
- \*: Don't Care (the module will replace \* with 0x0)
- PTR: Physical address SMI handler will write to (the module will replace PTR with physical address provided as a command-line argument)
- VAL: Value SMI handler will write to PTR address (the module will replace VAL with hardcoded \_FILL\_VALUE\_xx)

Examples:

```
>>> chipsec_main.py -m tools.smm.smm_ptr
>>> chipsec_main.py -m tools.smm.smm_ptr -a fuzzmore,0x0:0xFF -l smm.log
```

## Warning

- This is a potentially destructive test

uefi package

reputation module

This module checks current contents of UEFI firmware ROM or specified firmware image for bad EFI binaries as per the VirusTotal API. These can be EFI firmware volumes, EFI executable binaries (PEI modules, DXE drivers..) or EFI sections. The module can find EFI binaries by their UI names, EFI GUIDs, MD5/SHA-1/SHA-256 hashes or contents matching specified regular expressions.

Important! This module can only detect bad or vulnerable EFI modules based on the file's reputation on VT.

Usage:

**chipsec\_main.py -i -m tools.uefi.reputation -a <vt\_api\_key>[,<vt\_threshold>,<fw\_image>]**

**vt\_api\_key** : API key to VirusTotal. Can be obtained by visiting  
<https://www.virustotal.com/gui/join-us>.

This argument must be specified.

**vt\_threshold** : *The minimal number of different AV vendors on VT which must claim an EFI module is malicious*

before failing the test. Defaults to 10.

**fw\_image** : *Full file path to UEFI firmware image*

If not specified, the module will dump firmware image directly from ROM

## Note

- Requires virustotal-api

### s3script\_modify module

This module will attempt to modify the S3 Boot Script on the platform. Doing this could cause the platform to malfunction. Use with care!

#### Usage:

Replacing existing opcode:

```
chipsec_main.py -m tools.uefi.s3script_modify -a replace_op,<reg_opcode>,<address>,<value>
<reg_opcode> = pci_wr|mmio_wr|io_wr|pci_rw|mmio_rw|io_rw

chipsec_main.py -m tools.uefi.s3script_modify -a replace_op,mem[,<address>,<value>]

chipsec_main.py -m tools.uefi.s3script_modify -a replace_op,dispatch``

chipsec_main.py -m tools.uefi.s3script_modify -a replace_op,dispatch_ep``
```

Adding new opcode:

```
chipsec_main.py -m tools.uefi.s3script_modify -a add_op,<reg_opcode>,<address>,<value>,<width>
<reg_opcode> = pci_wr|mmio_wr|io_wr

chipsec_main.py -m tools.uefi.s3script_modify -a add_op,dispatch[,<entrypoint>]
```

#### Examples:

```
>>> chipsec_main.py -m tools.uefi.s3script_modify -a replace_op,<reg_opcode>,<address>,<value>
>>> <reg_opcode> = pci_wr|mmio_wr|io_wr|pci_rw|mmio_rw|io_rw
```

The option will look for a script opcode that writes to PCI config, MMIO or I/O registers and modify the opcode to write the given value to the register with the given address.

After executing this, if the system is vulnerable to boot script modification, the hardware configuration will have changed according to given <reg\_opcode>.

```
>>> chipsec_main.py -m tools.uefi.s3script_modify -a replace_op,mem
```

The option will look for a script opcode that writes to memory and modify the opcode to write the given value to the given address.

By default this test will allocate memory and write write 0xB007B007 that location.

After executing this, if the system is vulnerable to boot script modification, you should find the given value in the allocated memory location.

```
>>> chipsec_main.py -m tools.uefi.s3script_modify -a replace_op,dispatch
```

The option will look for a dispatch opcode in the script and modify the opcode to point to a different entry point. The new entry point will contain a HLT instruction.

After executing this, if the system is vulnerable to boot script modification, the system should hang on resume from S3.

```
>>> chipsec_main.py -m tools.uefi.s3script_modify -a replace_op,dispatch_ep
```

The option will look for a dispatch opcode in the script and will modify memory at the entry point for that opcode. The modified instructions will contain a HLT instruction.

After executing this, if the system is vulnerable to dispatch opcode entry point modification, the system should hang on resume from S3.

```
>>> chipsec_main.py -m tools.uefi.s3script_modify -a add_op,<reg_opcode>,<address>,<value>,<width>
>>> <reg_opcode> = pci_wr|mmio_wr|io_wr
```

The option will add a new opcode which writes to PCI config, MMIO or I/O registers with specified values.

```
>>> chipsec_main.py -m tools.uefi.s3script_modify -a add_op,dispatch
```

The option will add a new DISPATCH opcode to the script with entry point to either existing or newly allocated memory.

#### scan\_blocked module

This module checks current contents of UEFI firmware ROM or specified firmware image for blocked EFI binaries which can be EFI firmware volumes, EFI executable binaries (PEI modules, DXE drivers..) or EFI sections. The module can find EFI binaries by their UI names, EFI GUIDs, MD5/SHA-1/SHA-256 hashes or contents matching specified regular expressions.

Important! This module can only detect what it knows about from its config file. If a bad or vulnerable binary is not detected then its 'signature' needs to be added to the config.

#### Usage:

```
chipsec_main.py -i -m tools.uefi.scan_blocked [-a <fw_image>,<blockedlist>]
```

- `fw_image` Full file path to UEFI firmware image. If not specified, the module will dump firmware image directly from ROM
- `blockedlist` JSON file with configuration of blocked EFI binaries (default = `blockedlist.json`). Config file should be located in the same directory as this module

#### Examples:

```
>>> chipsec_main.py -m tools.uefi.scan_blocked
```

Dumps UEFI firmware image from flash memory device, decodes it and checks for blocked EFI modules defined in the default config `blockedlist.json`

```
>>> chipsec_main.py -i --no_driver -m tools.uefi.scan_blocked -a uefi.rom,blockedlist.json
```

Decodes `uefi.rom` binary with UEFI firmware image and checks for blocked EFI modules defined in `blockedlist.json` config

#### Note

- `-i` and `--no_driver` arguments can be used in this case because the test does not depend on the platform and no kernel driver is required when firmware image is specified

## scan\_image module

The module can generate a list of EFI executables from (U)EFI firmware file or extracted from flash ROM, and then later check firmware image in flash ROM or file against this list of expected executables

**Usage:**

```
chipsec_main -m tools.uefi.scan_image [-a generate|check,<json>,<fw_image>]
```

- **generate** **Generates a list of EFI executable binaries from the UEFI**  
firmware image (default)
- **check** **Decodes UEFI firmware image and checks all EFI executable**  
binaries against a specified list
- **json** **JSON file with configuration of allowed list EFI**  
executables (default = `efilist.json`)
- **fw\_image** **Full file path to UEFI firmware image. If not specified,**  
the module will dump firmware image directly from ROM

**Examples:**

```
>>> chipsec_main -m tools.uefi.scan_image
```

Creates a list of EFI executable binaries in `efilist.json` from the firmware image extracted from ROM

```
>>> chipsec_main -i -n -m tools.uefi.scan_image -a generate,efilist.json,uefi.rom
```

Creates a list of EFI executable binaries in `efilist.json` from `uefi.rom` firmware binary

```
>>> chipsec_main -i -n -m tools.uefi.scan_image -a check,efilist.json,uefi.rom
```

Decodes `uefi.rom` UEFI firmware image binary and checks all EFI executables in it against a list defined in `efilist.json`

**Note**

- `-i` and `-n` arguments can be used when specifying firmware file because the module doesn't depend on the platform and doesn't need kernel driver

## uefivar\_fuzz module

The module is fuzzing UEFI Variable interface.

The module is using UEFI SetVariable interface to write new UEFI variables to SPI flash NVRAM with randomized name/attributes/GUID/data/size.

**Usage:**

```
chipsec_main -m tools.uefi.uefivar_fuzz [-a <options>]
```

**Options:**

```
[-a <test>,<iterations>,<seed>,<test_case>]
```

- `test` : UEFI variable interface to fuzz (all, name, guid, attrib, data, size)
- `iterations` : Number of tests to perform (default = 1000)
- `seed` : RNG seed to use
- `test_case` : Test case # to skip to (combined with seed, can be used to skip to failing test)



All module arguments are optional

### Examples::

```
>>> chipsec_main.py -m tools.uefi.uefivar_fuzz
>>> chipsec_main.py -m tools.uefi.uefivar_fuzz -a all,100000
>>> chipsec_main.py -m tools.uefi.uefivar_fuzz -a data,1000,123456789
>>> chipsec_main.py -m tools.uefi.uefivar_fuzz -a name,1,123456789,94
```

### Note

- This module returns a WARNING by default to indicate that a manual review is needed.
- Writes may generate 'ERROR's, this can be expected behavior if the environment rejects them.

### Warning

- This module modifies contents of non-volatile SPI flash memory (UEFI Variable NVRAM).
- This may render system UNBOOTABLE if firmware doesn't properly handle variable update/delete operations.

### Important

- Evaluate the platform for expected behavior to determine PASS/FAIL.
- Behavior can include platform stability and retaining protections.

vmm package

hv package

define module

Hyper-V specific defines

hypercall module

Hyper-V specific hypercall functionality

hypercallfuzz module

Hyper-V hypercall fuzzer

### Usage:

```
chipsec_main.py -i -m tools.vmm.hv.hypercall -a <mode>[,<vector>,<iterations>] -l log.txt
```

- mode fuzzing mode
  - = status-fuzzing finding parameters with hypercall success status
  - = params-info shows input parameters valid ranges
  - = params-fuzzing parameters fuzzing based on their valid ranges
  - = custom-fuzzing fuzzing of known hypercalls
- vector hypercall vector
- iterations number of hypercall iterations

Note: the fuzzer is incompatible with native VMBus driver (`vmbus.sys`). To use it, remove `vmbus.sys`

### synth\_dev module

Hyper-V VMBus synthetic device generic fuzzer

#### Usage:

Print channel offers:

```
chipsec_main.py -i -m tools.vmm.hv.synth_dev -a info
```

Fuzzing device with specified relid:

```
chipsec_main.py -i -m tools.vmm.hv.synth_dev -a fuzz,<relid> -l log.txt
```

Note: the fuzzer is incompatible with native VMBus driver (`vmbus.sys`). To use it, remove `vmbus.sys`

### synth\_kbd module

Hyper-V VMBus synthetic keyboard fuzzer. Fuzzes inbound ring buffer in VMBus virtual keyboard device.

#### Usage:

```
chipsec_main.py -i -m tools.vmm.hv.synth_kbd -a fuzz -l log.txt
```

Note: the fuzzer is incompatible with native VMBus driver (`vmbus.sys`). To use it, remove `vmbus.sys`

### vmbus module

Hyper-V VMBus functionality

### vmbusfuzz module

Hyper-V VMBus generic fuzzer

#### Usage:

```
chipsec_main.py -i -m tools.vmm.hv.vmbusfuzz -a fuzz,<parameters>
```

Parameters:

- `all` : Fuzzing all bytes
- `hv` : Fuzzing HyperV message header
- `vmbus` : Fuzzing HyperV message body / VMBUS message
- `<pos>, <size>` : Fuzzing number of bytes at specific position

**Examples:**

```
>>> chipsec_main.py -i -m tools.vmm.hv.vmbusfuzz -a fuzz,all -l log.txt
```

## Note

- The fuzzer is incompatible with native VMBus driver (`vmbus.sys`). To use it, remove `vmbus.sys`
- Returns a Warning by default
- System may be in an unknown state, further evaluation may be needed

## Important

- This module is designed to run in a VM environment
- Behavior on physical HW is undefined

vbox package

vbox\_crash\_apicbase module

Oracle VirtualBox CVE-2015-0377 check

**Reference:**

- PoC test for Host OS Crash when writing to IA32\_APIC\_BASE MSR (Oracle VirtualBox CVE-2015-0377)
- <http://www.oracle.com/technetwork/topics/security/cpujan2015-1972971.html>

**Usage:**

```
chipsec_main.py -i -m tools.vmm.vbox_crash_apicbase
```

**Examples:**

```
>>> chipsec_main.py -i -m tools.vmm.vbox_crash_apicbase
```

**Registers used:**

- IA32\_APIC\_BASE

## Warning

- Module can cause VMM/Host OS to crash; if so, this is a FAILURE

xen package

define module

Xen specific defines

hypercall module

Xen specific hypercall functionality

hypercallfuzz module

Xen hypercall fuzzer

**Usage:**

```
chipsec_main.py -i -m tools.vmm.xen.hypercallfuzz -a <mode>[,<vector>,<iterations>]
```

- mode : fuzzing mode
  - help : Prints this help
  - info : Hypervisor information
  - fuzzing : Fuzzing specified hypercall
  - fuzzing-all : Fuzzing all hypercalls
  - fuzzing-all-randomly : Fuzzing random hypercalls
- <vector> : Code or name of a hypercall to be fuzzed (use info)
- <iterations> : Number of fuzzing iterations

**Examples:**

```
>>> chipsec_main.py -i -m tools.vmm.xen.hypercallfuzz -a fuzzing,10 -l log.txt
>>> chipsec_main.py -i -m tools.vmm.xen.hypercallfuzz -a fuzzing-all,50 -l log.txt
>>> chipsec_main.py -i -m tools.vmm.xen.hypercallfuzz -a fuzzing-all-randomly,10,0x10000000 -l log.txt
```

## Note

- Returns a Warning by default
- System may be in an unknown state, further evaluation may be needed

## Important

- This module is designed to run in a VM environment
- Behavior on physical HW is undefined

#### xsa188 module

This module triggers host crash on vulnerable Xen 4.4

##### Reference:

- [Proof-of-concept module for Xen XSA-188](#)
  - CVE-2016-7154: “use after free in FIFO event channel code”
  - Discovered by Mikhail Gorobets

##### Usage:

```
chipsec_main.py -m tools.vmm.xen.xsa188
```

##### Examples:

```
>>> chipsec_main.py -i -m tools.vmm.xen.xsa188
```

### Note

- Returns a Warning by default
- System may be in an unknown state, further evaluation may be needed

### Important

- This module is designed to run in a VM environment
- Behavior on physical HW is undefined

#### common module

Common functionality for VMM related modules/tools

#### cpuid\_fuzz module

Simple CPUID VMM emulation fuzzer

##### Usage:

```
chipsec_main.py -i -m tools.vmm.cpuid_fuzz [-a random]
```

- random : Fuzz in random order (default is sequential)

##### Where:

- [ ]: optional line

##### Examples:

```
>>> chipsec_main.py -i -m tools.vmm.cpuid_fuzz
>>> chipsec_main.py -i -m tools.vmm.cpuid_fuzz -l log.txt
>>> chipsec_main.py -i -m tools.vmm.cpuid_fuzz -a random
```

##### Additional options set within the module:

- `_NO_EAX_TO_FUZZ` : No of EAX values to fuzz within each step

- `_EAX_FUZZ_STEP` : Step to fuzz range of EAX values
- `_NO_ITERATIONS_TO_FUZZ` : Number of iterations if *random* chosen
- `_FUZZ_ECX_RANDOM` : Fuzz ECX with random values?
- `_MAX_ECX` : Max ECX value
- `_EXCLUDE_CPUID` : Exclude the following EAX values from fuzzing
- `_FLUSH_LOG_EACH_ITER` : Flush log file after each iteration
- `_LOG_OUT_RESULTS` : Log output results

## Note

- Returns a Warning by default
- System may be in an unknown state, further evaluation may be needed

## Important

- This module is designed to run in a VM environment
- Behavior on physical HW is undefined

### ept\_finder module

#### Extended Page Table (EPT) Finder

##### Usage:

```
chipsec_main -m tools.vmm.ept_finder [-a dump,<file_name>|file,<file_name>,<revision_id>]
```

- `dump` : Dump contents
- `file` : Load contents from file
- `<file_name>` : File name to read from or dump to
- `<revision_id>` : Revision ID (hex)

##### Where:

- `[ ]`: optional line

##### Examples:

```
>>> chipsec_main.py -i -m tools.vmm.ept_finder
>>> chipsec_main.py -i -m tools.vmm.ept_finder -a dump,my_file.bin
>>> chipsec_main.py -i -m tools.vmm.ept_finder -a file,my_file.bin,0x0
```

## Important

- This module is designed to run in a VM environment
- Behavior on physical HW is undefined

## hypercallfuzz module

Pretty simple VMM hypercall fuzzer

**Usage:**

```
chipsec_main.py -i -m tools.vmm.hypercallfuzz [-a <mode>,<vector_reg>,<maxval>,<iterations>]
```

- mode : *Hypercall fuzzing mode*
  - exhaustive : Fuzz all arguments exhaustively in range [0:<maxval>] (default)
  - random : Send random values in all registers in range [0:<maxval>]
- vector\_reg : Hypercall vector register
- maxval : Maximum value of each register
- iterations : Number of iterations in random mode

**Where:**

- [ ]: optional line

**Examples:**

```
>>> chipsec_main.py -i -m tools.vmm.hypercallfuzz
>>> chipsec_main.py -i -m tools.vmm.hypercallfuzz -a random,22,0xFFFF,1000
```

**Additional options set within the module:**

- DEFAULT\_VECTOR\_MAXVAL : Default maximum value
- DEFAULT\_MAXVAL\_EXHAUSTIVE : Default maximum value for exhaustive testing
- DEFAULT\_MAXVAL\_RANDOM : Default maximum value for random testing
- DEFAULT\_RANDOM\_ITERATIONS : Default iterations for random testing
- \_FLUSH\_LOG\_EACH\_ITER : Set to flush log after each iteration
- \_LOG\_ALL\_GPRS : Display log of each iteration values

**Note**

- Returns a Warning by default
- System may be in an unknown state, further evaluation may be needed

**Important**

- This module is designed to run in a VM environment
- Behavior on physical HW is undefined

## iofuzz module

Simple port I/O VMM emulation fuzzer

**Usage:**

```
chipsec_main.py -i -m tools.vmm.iofuzz [-a <mode>,<count>,<iterations>]
```

- `<mode>` : *SMT handlers testing mode*
  - `exhaustive` : Fuzz all I/O ports exhaustively (default)
  - `random` : Fuzz randomly chosen I/O ports
- `<count>` : Number of times to write to each port (default = 1000)
- `<iterations>` : Number of I/O ports to fuzz (default = 1000000 in random mode)

**Where:**

- `[ ]`: optional line

**Examples:**

```
>>> chipsec_main.py -i -m tools.vmm.iofuzz
>>> chipsec_main.py -i -m tools.vmm.iofuzz -a random,9000,4000000
```

**Additional options set within the module:**

- `MAX_PORTS` : Maximum ports
- `MAX_PORT_VALUE` : Maximum port value to use
- `DEFAULT_PORT_WRITE_COUNT` : Default port write count if not specified with switches
- `DEFAULT_RANDOM_ITERATIONS` : Default port write iterations if not specified with switches
- `_FLUSH_LOG_EACH_ITER` : Flush log after each iteration
- `_FUZZ_SPECIAL_VALUES` : Specify to use 1-2-4 byte values
- `_EXCLUDE_PORTS` : Ports to exclude (list)

## Note

- Returns a Warning by default
- System may be in an unknown state, further evaluation may be needed

## Important

- This module is designed to run in a VM environment
- Behavior on physical HW is undefined

### msr\_fuzz module

Simple CPU Module Specific Register (MSR) VMM emulation fuzzer

**Usage:**

```
chipsec_main -m tools.vmm.msrfuzz [-a random]
```

- `-a` : random = use random values (default = sequential numbering)

**Where:**

- `[ ]`: optional line

**Examples:**



```
>>> chipsec_main.py -i -m tools.vmm.msr_fuzz
>>> chipsec_main.py -i -m tools.vmm.msr_fuzz -a random
```

**Additional options set within the module:**

- `_NO_ITERATIONS_TO_FUZZ` : Number of iterations to fuzz randomly
- `_READ_MSR` : Specify to read MSR when fuzzing it
- `_FLUSH_LOG_EACH_MSR` : Flush log file before each MSR
- `_FUZZ_VALUE_0_all1s` : Try all 0 & all 1 values to be written to each MSR
- `_FUZZ_VALUE_5A` : Try 0x5A values to be written to each MSR
- `_FUZZ_VALUE_RND` : Try random values to be written to each MSR
- `_EXCLUDE_MSR` : MSR values to exclude (list)

**Note**

- Returns a Warning by default
- System may be in an unknown state, further evaluation may be needed

**Important**

- This module is designed to run in a VM environment
- Behavior on physical HW is undefined

**pcie\_fuzz module**

Simple PCIe device Memory-Mapped I/O (MMIO) and I/O ranges VMM emulation fuzzer

**Usage:**

```
chipsec_main -m tools.vmm.pcie_fuzz [-a <bus> <dev> <fun>]
```

- `<bus>` : Bus # to fuzz (in hex)
- `<dev>` : Device # to fuzz (in hex)
- `<fun>` : Function # to fuzz (in hex)

**Where:**

- `[ ]`: optional line

**Examples:**

```
>>> chipsec_main.py -i -m tools.vmm.pcie_fuzz
>>> chipsec_main.py -i -m tools.vmm.pcie_fuzz -l log.txt
>>> chipsec_main.py -i -m tools.vmm.pcie_fuzz -a 0 1f 0
```

**Additional options set within the module:**

- `IO_FUZZ` : Set to fuzz IO BARs
- `CALC_BAR_SIZE` : Set to calculate BAR sizes

- `TIMEOUT` : Timeout between memory writes (seconds)
- `ACTIVE_RANGE` : Set to fuzz MMIO BAR in Active range
- `BIT_FLIP` : Set to fuzz using bit flips
- `_EXCLUDE_BAR` : BARs to exclude (list)

## Note

- Returns a Warning by default
- System may be in an unknown state, further evaluation may be needed

## Important

- This module is designed to run in a VM environment
- Behavior on physical HW is undefined

### pcie\_overlap\_fuzz module

PCIe device Memory-Mapped I/O (MMIO) ranges VMM emulation fuzzer which first overlaps MMIO BARs of all available PCIe devices then fuzzes them by writing garbage if corresponding option is enabled

#### Usage:

```
chipsec_main.py -i -m tools.vmm.pcie_overlap_fuzz
```

#### Examples:

```
>>> chipsec_main.py -i -m tools.vmm.pcie_overlap_fuzz -l log.txt
```

#### Additional options set within the module:

- `OVERLAP_MODE` : Set overlap direction
- `FUZZ_OVERLAP` : Set for fuzz overlaps
- `FUZZ_RANDOM` : Set to fuzz in random mode
- `_EXCLUDE_MMIO_BAR1` : List 1 of MMIO bars to exclude
- `_EXCLUDE_MMIO_BAR2` : List 2 of MMIO bars to exclude

## Note

- Returns a Warning by default
- System may be in an unknown state, further evaluation may be needed

## Important

- This module is designed to run in a VM environment
- Behavior on physical HW is undefined

## venom module

QEMU VENOM vulnerability DoS PoC test

**Reference:**

- Module is based on [PoC by Marcus Meissner](#)
- [VENOM: QEMU vulnerability \(CVE-2015-3456\)](#)

**Usage:**

```
chipsec_main.py -i -m tools.vmm.venom
```

**Examples:**

```
>>> chipsec_main.py -i -m tools.vmm.venom
```

**Additional options set within the module:**

- ITER\_COUNT : Iteration count
- FDC\_PORT\_DATA\_FIFO : FDC DATA FIFO port
- FDC\_CMD\_WRVAL : FDC Command write value
- FD\_CMD : FD Command

**Note**

- Returns a Warning by default
- System may be in an unknown state, further evaluation may be needed

**Important**

- This module is designed to run in a VM environment
- Behavior on physical HW is undefined

## generate\_test\_id module

Generate a test ID using hashlib from the test's file name (no file extension). Hash is truncated to 28 bits.

**Usage:**

```
chipsec_main -m common.tools.generate_test_id -a <test name>
```

**Examples:**

```
>>> chipsec_main.py -m common.tools.generate_test_id -a remap
>>> chipsec_main.py -m common.tools.generate_test_id -a s3bootscript
>>> chipsec_main.py -m common.tools.generate_test_id -a bios_ts
```

## wsmt module

The Windows SMM Security Mitigation Table (WSMT) is an ACPI table defined by Microsoft that allows system firmware to confirm to the operating system that certain security best practices have been implemented in System Management Mode (SMM) software.

**Reference:**

- See <https://docs.microsoft.com/en-us/windows-hardware/design/device-experiences/oem-uefi-wsmt> for more details.

**Usage:**

```
chipsec_main -m common.wsmc
```

**Examples:**

```
>>> chipsec_main.py -m common.wsmc
```

## Note

- Analysis is only necessary if Windows is the primary OS

# Contribution and Style Guides

## Python Version

All Python code, and PEP support, must to be limited to the features supported by **Python 3.6.8**.

This is earliest version of Python utilized by CHIPSEC, the version of the EFI Shell Python.

## Python Coding Style Guide

CHIPSEC mostly follows the PEP8 with some exceptions. This attempts to highlight those as well as clarify others.

Consistency and readability are the goal but not at the expense of readability or functionality.

If in doubt, follow the existing code style and formatting.

### 1. PEP8

PEP 8 is a set of recommended code style guidelines (conventions) for Python.

[PEP 8](#)

### 2. Linting tools

CHIPSEC includes a Flake8 configuration file

[CHIPSEC flake8 config](#)

### 3. Zen of Python

Great philosophy around Python building principles.

[PEP 20](#)

### 4. Headers and Comments

Use single line comments, a single hash/number sign/octothorpe '#'.

Should contain a space immediately after the '#'.

```
# Good header comment
```

## 5. Single vs Double Quotes

Single quotes are encouraged but can vary with use case.

Avoid using backslashes '\' in strings.

```
'This is a preferred "string".'
```

```
"Also an acceptable 'string'."
```

```
"Avoid making this \"string\"."
```

## 6. Imports

**Import order:**

1. Python standard library
2. Third-party imports
3. CHIPSEC and local application imports

Avoid using `import *` or `from import *`. This could pollute the namespace.

```
# Good
import sys
from chipsec.module_common import BaseModule, ModuleResult

# Bad - using '*' and importing sys after local imports
import *
from chipsec.module_common import *
import sys
```

Avoid using `from __future__ imports`. These may not work on older or all interpreter versions required in all supported environments.

## 7. Line Length

Maximum line length should be 120 characters.

If at or near this limit, consider rewriting (eg simplifying) the line instead of breaking it into multiple lines.

Long lines can be an indication that too many things are happening at once and/or difficult to read.

## 8. Class Names

HAL and utilcmd **classes** should use **UpperCamelCase (PascalCase)** Words and acronyms are capitalized with no spaces or underscores.

Test **module** class names MUST match the module name which are typically **snake\_case**

## 9. Constants

Constants should use **CAPITALIZATION\_WITH\_UNDERSCORES**

## 10 Variable Names

- Variable names should use **snake\_case**
- Lower-case text with underscores between words.

## 11 Local Variable Names (private)

- Prefixed with an underscore, **\_private\_variable**
- Not a hard rule but will help minimize any variable name collisions with upstream namespace.

## 12 Dunder (double underscore)

- Avoid using `__dunders__` when naming variables. Should be used for functions that overwrite or add to classes and only as needed.

Dunders utilize double (two) underscore characters before and after the name.

## 13 Code Indents

- CHIPSEC uses 4 space 'tabbed' indents.

No mixing spaces and tabs.

- 1 indent = 4 spaces
- No tabs

Recommend updating any IDE used to use 4 space indents by default to help avoid mixing tabs with spaces in the code.

## 14 Operator Precedence, Comparisons, and Parentheses

- If in doubt, wrap evaluated operators into logical sections if using multiple operators or improves readability.

While not needed in most cases, it can improve readability and limit the possibility of 'left-to-right chaining' issues.

```
# Preferred
if (test1 == True) or (test2 in data_list):
    return True

# Avoid. Legal but behavior may not be immediately evident.
if True is False == False:
    return False
```

## 15 Whitespace

- No whitespace inside parentheses, brackets, or braces.

No whitespace before a comma, colon, or semicolons.

Use whitespace after a comma, colon, or semicolon.

Use whitespace around operators: +, -, \*, \*\*, /, //, %, =, ==, <, >, <=, >=, <>, !=, is, in, is not, not in, <<, >>, &, |, ^

No trailing whitespace.

## 16 Non-ASCII Characters

- If including any non-ASCII characters anywhere in a python file, include the python encoding comment at the beginning of the file.

```
# -*- coding: utf-8 -*-
```

No non-ASCII class, function, or variable names.

## 17 Docstrings

- Use three double-quotes for all docstrings.

```
"""String description docstring."""
```

## 18 Semicolons

- Do not use semicolons.

## 19 Try Except

- Avoid using nested try-except.

The routine you are calling, may already be using one.

#### 20 Avoid for-else and while-else loops

- The loop behavior for these can be counterintuitive.

If they have to be used, make sure to properly document the expected behavior / work-flow.

## f-Strings

### PEP versions supported by CHIPSEC

PEP / bpo	Title	Summary	Python Version	Supported
PEP 498	Literal String Interpolation	Adds a new string formatting mechanism: Literal String Interpolation, f-strings	3.6	Yes
bpo 36817	Add = to f-strings for easier debugging	f-strings support = for self-documenting expressions	3.8	No
PEP 701	Syntactic formalization of f-strings	Lift some restrictions from PEP 498 and formalize grammar for f-strings	3.12	No

## Type Hints

**For more information on Python Type Hints:**

[PEP 483 - The Theory of Type Hints](#)

This table lists which Type Hint PEPs are in scope for CHIPSEC.

### PEP versions supported by CHIPSEC

PEP	Title	Summary	Python Version	Supported
PEP 3107	Function Annotations	Syntax for adding arbitrary metadata annotations to Python functions	3.0	Yes
PEP 362	Function Signature Object	Contains all necessary information about a function and its parameters	3.3	Yes
PEP 484	Type Hints	Standard syntax for type annotations	3.5	Yes

<a href="#">PEP 526</a>	Syntax for Variable Annotations	Adds syntax for annotating the types of variables	3.6	Yes
<a href="#">PEP 544</a>	Protocols: Structural subtyping (static duck typing)	Specify type metadata for static type checkers and other third-party tools	3.8	No
<a href="#">PEP 585</a>	Type Hinting Generics In Standard Collections	Enable support for the generics syntax in all standard collections currently available in the typing module	3.9	No
<a href="#">PEP 586</a>	Literal Types	Literal types indicate that some expression has literally a specific value(s).	3.8	No
<a href="#">PEP 589</a>	TypedDict: Type Hints for Dictionaries with a Fixed Set of Keys	Support dictionary object with a specific set of string keys, each with a value of a specific type	3.8	No
<a href="#">PEP 593</a>	Flexible function and variable annotations	Adds an Annotated type to the typing module to decorate existing types with context-specific metadata.	3.9	No
<a href="#">PEP 604</a>	Allow writing union types as X   Y	Overload the   operator on types to allow writing Union[X, Y] as X   Y	3.10	No
<a href="#">PEP 612</a>	Parameter Specification Variables	Proposes typing.ParamSpec and typing.Concatenate to support forwarding parameter types of one callable over to another callable	3.10	No
<a href="#">PEP 613</a>	Explicit Type Aliases	Formalizes a way to explicitly declare an assignment as a type alias	3.10	No
<a href="#">PEP 646</a>	Variadic Generics	Introduce TypeVarTuple, enabling parameterisation with an arbitrary number of types	3.11	No
<a href="#">PEP 647</a>	User-Defined Type Guards	Specifies a way for programs to influence conditional type narrowing employed by a type checker based on runtime checks	3.11	No
<a href="#">PEP 655</a>	Marking individual TypedDict items as required or potentially-missing	Two new notations: Required[], which can be used on individual items of a TypedDict to mark them as required, and NotRequired[]	3.11	No
<a href="#">PEP 673</a>	Self Type	Methods that return an instance of their class	3.10	No



<a href="#">PEP 675</a>	Arbitrary Literal String Type	Introduces supertype of literal string types: <code>LiteralString</code>	3.11	No
<a href="#">PEP 681</a>	Data Class Transforms	Provides a way for third-party libraries to indicate that certain decorator functions, classes, and metaclasses provide behaviors similar to dataclasses	3.11	No
<a href="#">PEP 692</a>	Using TypedDict for more precise kwargs typing	A new syntax for specifying kwargs type as a TypedDict without breaking current behavior	3.12	No
<a href="#">PEP 695</a>	Type Parameter Syntax	A syntax for specifying type parameters within a generic class, function, or type alias. And introduces a new statement for declaring type aliases.	3.12	No
<a href="#">PEP 698</a>	Override Decorator for Static Typing	Adds <code>@override</code> decorator to allow type checkers to prevent a class of bugs that occur when a base class changes methods that are inherited by derived classes.	3.12	No

## Underscores in Numeric Literals

Underscores in Numeric Literals are supported, even encouraged, but not required. For consistency, follow the grouping examples presented in the PEP abstract.

### PEP versions supported by CHIPSEC

PEP	Title	Summary	Python Version	Supported
<a href="#">PEP 515</a>	Underscores in Numeric Literals	Extends Python's syntax so that underscores can be used as visual separators for grouping purposes in numerical literals	3.6	Yes

## Walrus Operator (`:=`)

At this time, Assignment Expressions (Walrus operator) are not supported.

### PEP versions supported by CHIPSEC

PEP	Title	Summary	Python Version	Supported
<a href="#">PEP 572</a>	Assignment Expressions	Adds a way to assign to variables within an expression	3.8	No

## Deprecate distutils module support

Python 3.12 will deprecate and remove the distutils module. In order for CHIPSEC to support this and future versions of Python, setuptools should be used instead of distutils.

The setuptools module has been updated to fully replace distutils but requires an up-to-date version.

- Minimum setuptools version: [62.0.0](#) (requires Python  $\geq$  3.7)
- Recommended setuptools version: latest

**Note:** If you get any *setuptools.command.build* errors, verify that you have (at least) the minimum setuptools version.

### PEP versions supported by CHIPSEC

PEP / bpo	Title	Summary	Python Version	Supported
<a href="#">PEP 632</a>	Deprecate distutils module	Mark the distutils module as deprecated (3.10) and then remove it (3.12)	3.12	Yes